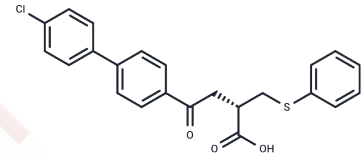


Tanomastat

Chemical Properties

CAS No. :	179545-77-8
Formula:	C ₂₃ H ₁₉ ClO ₃ S
Molecular Weight:	410.91
Storage:	Powder: -20°C for 3 years In solvent: -80°C for 1 year Actual storage temperature shall be subject to the COA.



Biological Description

Description	Tanomastat is an orally bioavailable and non-peptidic biphenyl matrix metalloproteinases inhibitor. For MMP-2, MMP-3, MMP-9, MMP-13 the Ki values are 11, 143, 301, and 1470 nM respectively.
Targets(IC50)	MMP
In vitro	Tanomastat (1-100 µM; 5 days) inhibits tubule formation completely at 15-100 µM. Tanomastat (1-10000 nM; 6 hours) prevents matrix invasion by endothelial cells in a concentration-dependent manner (IC ₅₀ =840 nM) [2][3].
In vivo	Tanomastat (100 mg/kg; p.o.; daily for a 7-week period) inhibits local tumor regrowth and inhibits the number and volume of lung metastases [3].

Preparing Stock Solutions

	1mg	5mg	10mg
1 mM	2.4336 mL	12.1681 mL	24.3362 mL
5 mM	0.4867 mL	2.4336 mL	4.8672 mL
10 mM	0.2434 mL	1.2168 mL	2.4336 mL
50 mM	0.0487 mL	0.2434 mL	0.4867 mL

Please select the appropriate solvent to prepare the stock solution, according to the solubility of the product in different solvents. Please use it as soon as possible.

Note: The dilution table applies only to solid products. For liquid products, please calculate the stock solution based on the stated concentration and/or density.

Reference

Leung D, et al. Protease inhibitors: current status and future prospects. J Med Chem. 2000 Feb 10;43(3):305-41.

Gatto C, et al. BAY 12-9566, a novel inhibitor of matrix metalloproteinases with antiangiogenic activity. Clin Cancer Res. 1999 Nov;5(11):3603-7.

Nozaki S, et al. Activity of biphenyl matrix metalloproteinase inhibitor BAY 12-9566 in a human breast cancer orthotopic model. Clin Exp Metastasis. 2003;20(5):407-12.

Inhibitor · Natural Compounds · Compound Libraries · Recombinant Proteins

This product is for Research Use Only · Not for Human or Veterinary or Therapeutic Use

Tel: 781-999-4286 E_mail: info@targetmol.com Address: 34 Washington Street, Wellesley Hills, MA 02481