

Lusianthridin

Chemical Properties

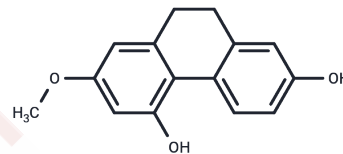
CAS No. : 87530-30-1

Formula: C₁₅H₁₄O₃

Molecular Weight: 242.27

Storage: Powder: -20°C for 3 years | In solvent: -80°C for 1 year

Actual storage temperature shall be subject to the COA.



Biological Description

Description	Lusianthridin is a natural product from <i>Dendrobium venustum</i> . Lusianthridin exhibits anti-migratory property at nontoxic concentrations. Lusianthridin enhances c-Myc degradation through the inhibition of Src-STAT3 signaling.
Targets(IC50)	c-Myc
In vitro	Lusianthridin showed appreciable cytotoxicity against human lung cancer cell lines with IC50 values of 65.0 µg/mL[1]. Lusianthridin (0-100 µM) inhibited cell viability at concentrations greater than 50 µM in both H460 and H292 cells[2]. Lusianthridin significantly reduced the CSC populations in both H460 and H292 cells of the CSC spheres, with a significant decrease in the size of the H460 CSC spheres by approximately 10%, 63%, and 77% at day 3 at concentrations of 5, 10, and 20 µM, respectively[2].

Preparing Stock Solutions

	1mg	5mg	10mg
1 mM	4.1276 mL	20.6381 mL	41.2763 mL
5 mM	0.8255 mL	4.1276 mL	8.2553 mL
10 mM	0.4128 mL	2.0638 mL	4.1276 mL
50 mM	0.0826 mL	0.4128 mL	0.8255 mL

Please select the appropriate solvent to prepare the stock solution, according to the solubility of the product in different solvents. Please use it as soon as possible.

Note: The dilution table applies only to solid products. For liquid products, please calculate the stock solution based on the stated concentration and/or density.

Reference

Cytotoxic and Antimigratory Activities of Phenolic Compounds from *Dendrobium brymerianum*. Evid Based Complement Alternat Med. 2015;2015:350410.

Narumol Bhummaphan, et al. Targeting of Lung Cancer Stem Cells via Src-STAT3 Suppression. Phytomedicine. 2019 Sep;62:152932.

Inhibitor · Natural Compounds · Compound Libraries · Recombinant Proteins

This product is for Research Use Only · Not for Human or Veterinary or Therapeutic Use

Tel:781-999-4286 E_mail:info@targetmol.com Address:34 Washington Street,Wellesley Hills,MA 02481