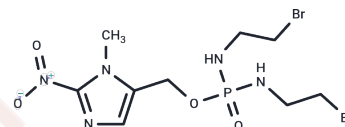


Evofosfamide

Chemical Properties

CAS No. :	918633-87-1
Formula:	C ₉ H ₁₆ Br ₂ N ₅ O ₄ P
Molecular Weight:	449.04
Storage:	Powder: -20°C for 3 years In solvent: -80°C for 1 year Actual storage temperature shall be subject to the COA.



Biological Description

Description	Evofosfamide (TH-302) is a hypoxia-activated prodrug of the cytotoxin bromo-isophosphoramidate mustard (Br-IPM) conjugated with 2-nitroimidazole, possessing potential antineoplastic activity. Under hypoxic conditions, typical of hypoxic tumors, the 2-nitroimidazole moiety is reduced, releasing the DNA-alkylating Br-IPM moiety, which induces intra- and inter-strand DNA crosslinks that inhibit DNA replication and cell division, potentially causing apoptosis in tumor cells. The inactive form of the prodrug remains stable under normoxic conditions, which may reduce systemic toxicity.
Targets(IC50)	Apoptosis
In vitro	TH-302 is selectively potent under hypoxia and stable to liver microsomes. Substitution of the chlorine with bromine on the phosphorus mustard in 3b increases the potency by 10-fold and maintains the high hypoxic selectivity [Hypoxia cytotoxicity ratio (HCR) = 270]. In both human lung cancer H460 cells and human colon cancer HT29 cells, potent cytotoxicity of TH-302 is observed under N2. TH-302 inhibits H460 cells and HT29 cells with IC90 of 0.1 μM and 0.2 μM, respectively. [1] TH-302 shows much enhanced potency in H460 spheroids compared to H460 monolayer cells under normoxia. [2] TH-302 exhibits potent cytotoxicity to MM cells with hypoxic selectivity and dose dependency. TH-302 can induce G0/G1 cell-cycle arrest under hypoxic conditions. The effect of TH-302 on cell-cycle machinery is mediated by down-regulating cyclin D1/2/3, CDK4/6, p21cip-1, p27kip-1, and pRb expression, whereas CDK2 expression remained undisturbed. TH-302 can induce dose-dependent apoptosis in both human and murine MM cells in hypoxic conditions. TH-302-activated apoptosis is mediated through down-regulating the antiapoptotic proteins BCL-2 and BCL-xL, as well as up-regulating the expression of cleaved proapoptotic protein caspase-3, -8, and -9 and poly ADP-ribose polymerase. In contrast to the hypoxia-specific toxicity, TH-302 shows very low toxicity in normoxic condition, even at high concentrations. [3]
In vivo	Evofosfamide inhibits primary tumor growth by 41% on day 25 after implantation, whereas Evofosfamide plus gemcitabine (a nucleoside analog) inhibits primary tumor growth by 96% on day 25. [1] When TH-302 is administered at 6.25, 12.5, 25, or 50 mg/kg in the H460 NSCLC xenograft model QD × 5/wk × 2 wks (once a day for 5 days per week for 2 weeks) i.p., the tumor growth inhibition at Day 22 is 43%, 51%, 75%, and 89%, respectively. TH-302 at 100 mg/kg shows a decrease in blood cell counts 3 days after treatment end, but is totally recovered 7 days post-treatment. TH-302 under all tested regimens exhibits efficacy metrics ranging from 58% to 89% tumor growth inhibition. TH-

In vivo	302 induced cell killing is breathing oxygen concentration dependent, with the greatest cytotoxicity occurring when the tumor-bearing mice are exposed to low oxygen concentrations. Tumor growth is significantly reduced by TH-302 in animals breathing 10% O ₂ compared with 95% O ₂ breathing. After TH-302 treatment, the pimonidazole-positive area is significantly decreased at 48 hours after dosing (6.3 % in vehicle vs. 1.8 % in the TH-302 treatment group). [4]</
Cell Research	Exponentially growing human H460 or HT29 cells are seeded into 60 mm notched glass plates at 3 × 10 ⁵ cells per plate and grown in RPMI medium supplemented with 10% fetal bovine serum for 2 days prior to initiating treatment. On the day of the test, TH-302 stocks of known concentrations are prepared in complete medium and 2 mL of the desired stock is added to each plate. The plates are placed in either an anaerobic chamber or a standard tissue-culture incubator. The anaerobic chamber is evacuated and gassed with the anaerobic gas mixture (90% N ₂ /5% CO ₂ /5% H ₂) to create a hypoxic environment. Cells are then incubated with TH-302 for 2 hours at 37 °C. At the end of treatment, plates are removed from each vessel and washed with phosphate-buffered saline and a solution of trypsin-EDTA and then trypsinized for 5 min at 37 °C. Detached cells are neutralized with medium plus serum and spun for 5 min at 100 g. Cells are resuspended at approximately 1 × 10 ⁶ cells/mL and diluted 10-fold for plating. The exact concentration of each stock is determined. Known numbers of cells are plated and placed undisturbed in an incubator for between 9 and 13 days. Colonies are fixed and stained with a solution of 95% ethanol with 0.25% crystal violet stain. Colonies of greater than 50 cells are counted, and the surviving fraction is determined. Plating efficiencies (PEs) are determined by dividing the number of colonies by the actual number of cells plated. Surviving fractions are calculated by dividing the PEs of treated cells by the PEs of untreated (Only for Reference)

Solubility Information

Solubility	Ethanol: 83 mg/mL (184.84 mM),Sonication is recommended. DMSO: 250 mg/mL (556.74 mM),Sonication is recommended. H ₂ O: 10 mg/mL (22.27 mM),Sonication is recommended. (< 1 mg/ml refers to the product slightly soluble or insoluble)
In vivo Formulation	10% DMSO+40% PEG300+5% Tween 80+45% Saline: 3.3 mg/mL (7.35 mM),Sonication is recommended. <i>Please add the solvents sequentially, clarifying the solution as much as possible before adding the next one. Dissolve by heating and/or sonication if necessary. Working solution is recommended to be prepared and used immediately. The formulation provided above is for reference purposes only. In vivo formulations may vary and should be modified based on specific experimental conditions.</i>

Preparing Stock Solutions

	1mg	5mg	10mg
1 mM	2.227 mL	11.1349 mL	22.2697 mL
5 mM	0.4454 mL	2.227 mL	4.4539 mL
10 mM	0.2227 mL	1.1135 mL	2.227 mL
50 mM	0.0445 mL	0.2227 mL	0.4454 mL

Please select the appropriate solvent to prepare the stock solution, according to the solubility of the product in different solvents. Please use it as soon as possible.

Note: The dilution table applies only to solid products. For liquid products, please calculate the stock solution based on the stated concentration and/or density.

Reference

Duan JX, et al. *J Med Chem*, 2008, 51(8), 2412-2420.

Meng F, et al. *Mol Cancer Ther*, 2012, 11(3), 740-751.

Hu J, et al. *Blood*, 2010, 116(9), 1524-1527.

Sun JD, et al. *Clin Cancer Res*, 2012, 18(3), 758-770.

Zhang X, et al. MR Imaging Biomarkers to Monitor Early Response to Hypoxia-Activated Prodrug TH-302 in Pancreatic Cancer Xenografts. *PLoS One*. 2016 May 26;11(5):e0155289.

Inhibitor · Natural Compounds · Compound Libraries · Recombinant Proteins

This product is for Research Use Only · Not for Human or Veterinary or Therapeutic Use

Tel:781-999-4286 E_mail:info@targetmol.com Address:34 Washington Street,Wellesley Hills,MA 02481