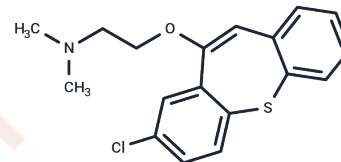


Zotepine

Chemical Properties

CAS No. :	26615-21-4
Formula:	C ₁₈ H ₁₈ ClNOS
Molecular Weight:	331.86
Storage:	Powder: -20°C for 3 years In solvent: -80°C for 1 year Actual storage temperature shall be subject to the COA.



Biological Description

Description	Zotepine, an antipsychotic agent, is a potent antagonist of 5-HT _{2A} , 5-HT _{2C} , Histamine H ₁ , α ₁ -adrenergic, and Dopamine D ₂ receptors, with K _d s of 2.6 nM, 3.2 nM, 3.3 nM, 7.3 nM, and 8 nM, respectively. This second-generation antipsychotic is primarily used to treat schizophrenia, and clinical trials have investigated its efficacy as an antimanic agent in patients with acute bipolar mania.
Targets(IC ₅₀)	5-HT Receptor, Adrenergic Receptor, Histamine Receptor, Dopamine Receptor

Solubility Information

Solubility	DMSO: 25 mg/mL (75.33 mM), Sonication is recommended. (< 1 mg/ml refers to the product slightly soluble or insoluble)
In vivo Formulation	10% DMSO+40% PEG300+5% Tween 80+45% Saline: 2 mg/mL (6.03 mM), Sonication is recommended. <i>Please add the solvents sequentially, clarifying the solution as much as possible before adding the next one. Dissolve by heating and/or sonication if necessary. Working solution is recommended to be prepared and used immediately. The formulation provided above is for reference purposes only. In vivo formulations may vary and should be modified based on specific experimental conditions.</i>

Preparing Stock Solutions

	1mg	5mg	10mg
1 mM	3.0133 mL	15.0666 mL	30.1332 mL
5 mM	0.6027 mL	3.0133 mL	6.0266 mL
10 mM	0.3013 mL	1.5067 mL	3.0133 mL
50 mM	0.0603 mL	0.3013 mL	0.6027 mL

Please select the appropriate solvent to prepare the stock solution, according to the solubility of the product in different solvents. Please use it as soon as possible.

Note: The dilution table applies only to solid products. For liquid products, please calculate the stock solution based on the stated concentration and/or density.

Reference

- Chan HY, Lin AS, Chen KP, Cheng JS, Chen YY, Tsai CJ. An open-label, randomized, controlled trial of zotepine and risperidone for acutely ill, hospitalized, schizophrenic patients with symptoms of agitation. *J Clin Psychopharmacol.* 2013 Dec;33(6):747-52. doi: 10.1097/JCP.0b013e31829e8168. PubMed PMID: 24100785.
- Lin CC, Chiu HJ, Chen JY, Liou YJ, Wang YC, Chen TT, Bai YM. Switching from clozapine to zotepine in patients with schizophrenia: a 12-week prospective, randomized, rater blind, and parallel study. *J Clin Psychopharmacol.* 2013 Apr;33(2):211-4. doi: 10.1097/JCP.0b013e31828700c7. PubMed PMID: 23422395.
- Khairkar P, Gupta N, Varma SK. Zotepine-induced convulsive seizures in a chronic case of treatment resistant paranoid schizophrenia. *Indian J Pharmacol.* 2013 Jan-Feb;45(1):95-7. doi: 10.4103/0253-7613.106447. PubMed PMID: 23543675; PubMed Central PMCID: PMC3608308.
- Chen IM, Hsieh MH, Hwang TJ, Liu CC. Zotepine-related myopathy in a patient with schizophrenia. *Eur J Clin Pharmacol.* 2013 Mar;69(3):725-6. doi: 10.1007/s00228-012-1346-y. Epub 2012 Jul 14. PubMed PMID: 22797903.

Inhibitor · Natural Compounds · Compound Libraries · Recombinant Proteins

This product is for Research Use Only · Not for Human or Veterinary or Therapeutic Use

Tel:781-999-4286 E_mail:info@targetmol.com Address:34 Washington Street,Wellesley Hills,MA 02481