

Azide-PEG-azide (MW 20000)

Chemical Properties

CAS No. :

Formula:

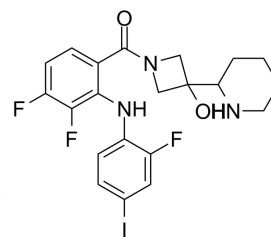
Molecular Weight:

Storage:

Keep away from direct sunlight

Powder: -20°C for 3 years | In solvent: -80°C for 1 year

Actual storage temperature shall be subject to the COA.



Biological Description

Description	Azide-PEG-azide (MW 20000) is a polyethylene glycol (PEG)-based linker compound used in the synthesis of Proteolysis Targeting Chimeras (PROTACs)[1].
Targets(IC50)	Others,PROTAC Linker
In vitro	PROTACs, comprising two distinct ligands joined by a linker—one binding to an E3 ubiquitin ligase and the other to the target protein—utilize the intracellular ubiquitin-proteasome system to selectively degrade target proteins[1].

Reference

An S, et al. Small-molecule PROTACs: An emerging and promising approach for the development of targeted therapy drugs. EBioMedicine. 2018 Oct;36:553-562

Inhibitor · Natural Compounds · Compound Libraries · Recombinant Proteins

This product is for Research Use Only· Not for Human or Veterinary or Therapeutic Use

Tel:781-999-4286

E_mail:info@targetmol.com

Address:34 Washington Street,Wellesley Hills,MA 02481