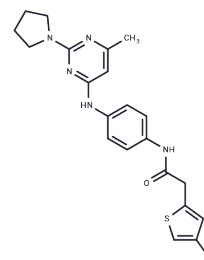


## CHD1Li 6.11

## Chemical Properties

CAS No. :	2716890-91-2
Formula:	C <sub>21</sub> H <sub>22</sub> BrN <sub>5</sub> O <sub>5</sub>
Molecular Weight:	472.4
Storage:	Powder: -20°C for 3 years   In solvent: -80°C for 1 year Actual storage temperature shall be subject to the COA.



## Biological Description

Description	CHD1Li 6.11 is a potent inhibitor of oncogenic CHD1L, acting on the cat-CHD1L recombinant protein (IC <sub>50</sub> : 3.3 μM). CHD1Li 6.11 is an orally active antitumour agent that significantly reduces the tumour volume of CRC xenografts generated from isolated quasi-mesenchymal cells (M phenotype) with enhanced tumourigenic properties. These cells have enhanced tumourigenic properties.
Targets(IC <sub>50</sub> )	Others,DNA/RNA Synthesis

## Solubility Information

Solubility	DMSO: 90 mg/mL (190.52 mM),Sonication is recommended. (< 1 mg/ml refers to the product slightly soluble or insoluble)
In vivo Formulation	10% DMSO+40% PEG300+5% Tween 80+45% Saline: 3.3 mg/mL (6.99 mM),Sonication is recommended. <i>Please add the solvents sequentially, clarifying the solution as much as possible before adding the next one. Dissolve by heating and/or sonication if necessary. Working solution is recommended to be prepared and used immediately. The formulation provided above is for reference purposes only. In vivo formulations may vary and should be modified based on specific experimental conditions.</i>

### Preparing Stock Solutions

---

	1mg	5mg	10mg
1 mM	2.1169 mL	10.5843 mL	21.1685 mL
5 mM	0.4234 mL	2.1169 mL	4.2337 mL
10 mM	0.2117 mL	1.0584 mL	2.1169 mL
50 mM	0.0423 mL	0.2117 mL	0.4234 mL

---

Please select the appropriate solvent to prepare the stock solution, according to the solubility of the product in different solvents. Please use it as soon as possible.

Note: The dilution table applies only to solid products. For liquid products, please calculate the stock solution based on the stated concentration and/or density.

### Reference

Prigaro BJ, et al. Design, Synthesis, and Biological Evaluation of the First Inhibitors of Oncogenic CHD1L. J Med Chem. 2022;65(5):3943-3961.

**Inhibitor · Natural Compounds · Compound Libraries · Recombinant Proteins**

This product is for Research Use Only · Not for Human or Veterinary or Therapeutic Use

Tel:781-999-4286 E\_mail:info@targetmol.com Address:34 Washington Street,Wellesley Hills,MA 02481