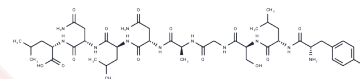


Carcinoembryonic antigen peptide

Chemical Properties

CAS No. :	168635-85-6
Formula:	C43H69N11O14
Molecular Weight:	964.07
Storage:	Keep away from moisture Powder: -20°C for 3 years In solvent: -80°C for 1 year <small>Actual storage temperature shall be subject to the COA.</small>



Biological Description

Description	Carcinoembryonic antigen peptide 1 (CEA peptide) is a Carcinoembryonic Antigen (CEA) derived peptide, of which sequen is YLSGANLNL. CEA is a broad-spectrum tumour marker, a glycoprotein produced by colorectal cancer tissues, which acts as an antigen to elicit an immune response.
Targets(IC50)	Others
In vitro	Carcinoembryonic Antigen (CEA) serves as a tumor marker for lung cancer and is utilized for both prognostic and predictive purposes. As a glycoprotein that plays a role in cell adhesion, CEA is typically produced during fetal development, with its production ceasing before birth. It is a glycosyl phosphatidyl inositol (GPI)-anchored cell surface glycoprotein, with its sialofucosylated glycoforms functioning as colon carcinoma L-selectin and E-selectin ligands. This characteristic is crucial for the potential metastatic spread of colon carcinoma cells.

Solubility Information

Solubility	DMSO: 10 mM, Sonication is recommended. H2O: 10 mg/mL (10.37 mM), Sonication is recommended. (< 1 mg/ml refers to the product slightly soluble or insoluble)
------------	---

Preparing Stock Solutions

	1mg	5mg	10mg
1 mM	1.0373 mL	5.1863 mL	10.3727 mL
5 mM	0.2075 mL	1.0373 mL	2.0745 mL
10 mM	0.1037 mL	0.5186 mL	1.0373 mL
50 mM	0.0207 mL	0.1037 mL	0.2075 mL

Please select the appropriate solvent to prepare the stock solution, according to the solubility of the product in different solvents. Please use it as soon as possible.

Note: The dilution table applies only to solid products. For liquid products, please calculate the stock solution based on the stated concentration and/or density.

Reference

Grunnet M, et al. Carcinoembryonic antigen (CEA) as tumor marker in lung cancer. Lung Cancer. 2012 May;76(2): 138-43.

Inhibitor · Natural Compounds · Compound Libraries · Recombinant Proteins

This product is for Research Use Only · Not for Human or Veterinary or Therapeutic Use

Tel:781-999-4286 E_mail:info@targetmol.com Address:34 Washington Street,Wellesley Hills,MA 02481