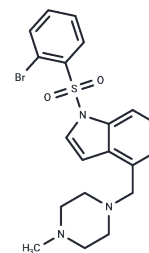


## 5HT6-ligand-1

## Chemical Properties

CAS No. :	1038988-11-2
Formula:	C <sub>20</sub> H <sub>22</sub> BrN <sub>3</sub> O <sub>2</sub> S
Molecular Weight:	448.38
Storage:	Powder: -20°C for 3 years   In solvent: -80°C for 1 year Actual storage temperature shall be subject to the COA.



## Biological Description

Description	5HT6-ligand-1 is an orally active ligand of 5-HT <sub>6</sub> receptor (K <sub>i</sub> = 1.43 nM).
Targets(IC <sub>50</sub> )	5-HT Receptor
In vivo	5HT6-ligand-1(10 mg/kg) reverses the time delay-induced memory deficit and improves cognitive ability. 5HT6-ligand-1 shows an oral t <sub>1/2</sub> of 3.17 h, a C <sub>max</sub> of 60 ng/mL, an exposure of 217 ng h/mL, and a bioavailability of 29%. Intravenous administration of 5HT6-ligand-1 exhibits a clearance of 220 mL/min/kg and a volume of distribution of 32.6 L/kg[1].

## Solubility Information

Solubility	DMSO: 10 mg/mL (22.3 mM),Sonication is recommended. (< 1 mg/ml refers to the product slightly soluble or insoluble)
------------	--

## Preparing Stock Solutions

	1mg	5mg	10mg
1 mM	2.2303 mL	11.1513 mL	22.3025 mL
5 mM	0.4461 mL	2.2303 mL	4.4605 mL
10 mM	0.223 mL	1.1151 mL	2.2303 mL
50 mM	0.0446 mL	0.223 mL	0.4461 mL

Please select the appropriate solvent to prepare the stock solution, according to the solubility of the product in different solvents. Please use it as soon as possible.

Note: The dilution table applies only to solid products. For liquid products, please calculate the stock solution based on the stated concentration and/or density.

Reference

Nirogi RVS, et al. Design, synthesis and pharmacological evaluation of 4-(piperazin-1-yl methyl)-N1-arylsulfonyl indole derivatives as 5-HT6 receptor ligands. Bioorg Med Chem Lett 22 (2012) 7431-7435

**Inhibitor · Natural Compounds · Compound Libraries · Recombinant Proteins**

This product is for Research Use Only · Not for Human or Veterinary or Therapeutic Use

Tel:781-999-4286 E\_mail:info@targetmol.com Address:34 Washington Street,Wellesley Hills,MA 02481