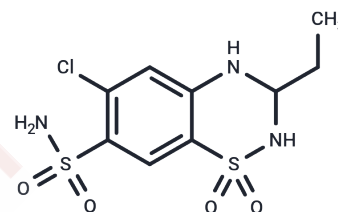


## Ethiazide

## Chemical Properties

CAS No. :	1824-58-4
Formula:	C <sub>9</sub> H <sub>12</sub> ClN <sub>3</sub> O <sub>4</sub> S <sub>2</sub>
Molecular Weight:	325.79
Storage:	Powder: -20°C for 3 years   In solvent: -80°C for 1 year Actual storage temperature shall be subject to the COA.



## Biological Description

Description	Ethiazide is a thiazole diuretic that inhibits renal tubular reabsorption of sodium and water, leading to increased urine output, reduced fluid retention, and decreased blood volume and blood pressure, Ethiazide is commonly applied in cardiovascular and renal research to study diuretic mechanisms and hypertension management.
Targets(IC50)	Natriuretic peptide

## Preparing Stock Solutions

	1mg	5mg	10mg
1 mM	3.0695 mL	15.3473 mL	30.6946 mL
5 mM	0.6139 mL	3.0695 mL	6.1389 mL
10 mM	0.3069 mL	1.5347 mL	3.0695 mL
50 mM	0.0614 mL	0.3069 mL	0.6139 mL

Please select the appropriate solvent to prepare the stock solution, according to the solubility of the product in different solvents. Please use it as soon as possible.

Note: The dilution table applies only to solid products. For liquid products, please calculate the stock solution based on the stated concentration and/or density.

## Reference

- Aso Y, et al. Epimerization and racemization of some chiral drugs in the presence of cyclodextrin and liposomes. Chem Pharm Bull (Tokyo). 1989 Oct;37(10):2786-9.
- Aso Y, et al. Epimerization and racemization of some chiral drugs in the presence of human serum albumin. Chem Pharm Bull (Tokyo). 1990 Jan;38(1):180-4. PubMed PMID: 2337941.
- Takamura N, et al. Interaction of benzothiadiazides with human serum albumin studied by dialysis and spectroscopic methods. Pharm Res. 1994 Oct;11(10):1452-7. PubMed PMID: 7855051.

**Inhibitor · Natural Compounds · Compound Libraries · Recombinant Proteins**

This product is for Research Use Only · Not for Human or Veterinary or Therapeutic Use

Tel:781-999-4286 E\_mail:info@targetmol.com Address:34 Washington Street,Wellesley Hills,MA 02481