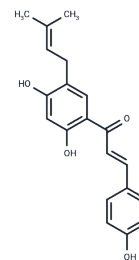


Bavachalcone

Chemical Properties

CAS No. :	28448-85-3
Formula:	C ₂₀ H ₂₀ O ₄
Molecular Weight:	324.37
Storage:	Powder: -20°C for 3 years In solvent: -80°C for 1 year Actual storage temperature shall be subject to the COA.



Biological Description

Description	Bavachalcone, a major bioactive compound isolated from <i>Psoralea corylifolia</i> * L., may serve as a therapeutic drug for bone resorption-associated diseases. It protects endothelial function by increasing AMPK activity and MnSOD expression while reducing mitochondrial oxidative stress.
Targets(IC50)	Apoptosis,NF-κB,Akt,Antibacterial,Antibiotic,Autophagy,PERK
In vitro	bavachalcone has excellent anticancer ability among other components of <i>C. corylifolium</i> by inducing apoptosis and autophagy[3].

Solubility Information

Solubility	DMSO: 75 mg/mL (231.22 mM),Sonication is recommended. (< 1 mg/ml refers to the product slightly soluble or insoluble)
------------	--

Preparing Stock Solutions

	1mg	5mg	10mg
1 mM	3.0829 mL	15.4145 mL	30.829 mL
5 mM	0.6166 mL	3.0829 mL	6.1658 mL
10 mM	0.3083 mL	1.5414 mL	3.0829 mL
50 mM	0.0617 mL	0.3083 mL	0.6166 mL

Please select the appropriate solvent to prepare the stock solution, according to the solubility of the product in different solvents. Please use it as soon as possible.

Note: The dilution table applies only to solid products. For liquid products, please calculate the stock solution based on the stated concentration and/or density.

Reference

Song H S , Jang S , Kang S C . Bavachalcone from Cullen corylifolium induces apoptosis and autophagy in HepG2 cells[J]. Phytomedicine, 2017:S0944711317302040.

Inhibitor · Natural Compounds · Compound Libraries · Recombinant Proteins

This product is for Research Use Only· Not for Human or Veterinary or Therapeutic Use

Tel:781-999-4286 E_mail:info@targetmol.com Address:34 Washington Street,Wellesley Hills,MA 02481