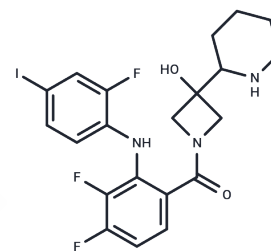


Cobimetinib racemate

Chemical Properties

CAS No. :	934662-91-6
Formula:	C ₂₁ H ₂₁ F ₃ N ₃ O ₂
Molecular Weight:	531.31
Storage:	Store at low temperature Powder: -20°C for 3 years In solvent: -80°C for 1 year <i>Actual storage temperature shall be subject to the COA.</i>



Biological Description

Description	Cobimetinib racemate (Cobimetinib (racemate)) (GDC-0973 racemate) is a selective inhibitor of MEK. Cobimetinib racemate is also known as a mitogen-activated protein kinase, is a key component of the RAS/RAF/MEK/ERK pathway.
Targets(IC50)	MEK

Solubility Information

Solubility	DMSO: 40 mg/mL (75.29 mM), Sonication is recommended. (< 1 mg/ml refers to the product slightly soluble or insoluble)
In vivo Formulation	10% DMSO+40% PEG300+5% Tween 80+45% Saline: 2 mg/mL (3.76 mM), Sonication is recommended. <i>Please add the solvents sequentially, clarifying the solution as much as possible before adding the next one. Dissolve by heating and/or sonication if necessary. Working solution is recommended to be prepared and used immediately. The formulation provided above is for reference purposes only. In vivo formulations may vary and should be modified based on specific experimental conditions.</i>

Preparing Stock Solutions

	1mg	5mg	10mg
1 mM	1.8821 mL	9.4107 mL	18.8214 mL
5 mM	0.3764 mL	1.8821 mL	3.7643 mL
10 mM	0.1882 mL	0.9411 mL	1.8821 mL
50 mM	0.0376 mL	0.1882 mL	0.3764 mL

Please select the appropriate solvent to prepare the stock solution, according to the solubility of the product in different solvents. Please use it as soon as possible.

Note: The dilution table applies only to solid products. For liquid products, please calculate the stock solution based on the stated concentration and/or density.

Reference

Hoeflich KP, et al. Intermittent administration of MEK inhibitor GDC-0973 plus PI3K inhibitor GDC-0941 triggers robust apoptosis and tumor growth inhibition. Cancer Res. 2012 Jan 1;72(1):210-9.

Inhibitor · Natural Compounds · Compound Libraries · Recombinant Proteins

This product is for Research Use Only · Not for Human or Veterinary or Therapeutic Use

Tel:781-999-4286 E_mail:info@targetmol.com Address:34 Washington Street,Wellesley Hills,MA 02481