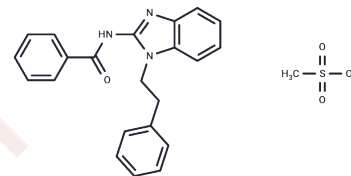


GW438014A

Chemical Properties

CAS No. : 469861-49-2
 Formula: C₂₃H₂₃N₃O₄S
 Molecular Weight: 437.51
 Storage: Powder: -20°C for 3 years | In solvent: -80°C for 1 year
 Actual storage temperature shall be subject to the COA.



Biological Description

| | |
|---------------|---|
| Description | GW438014A is a potent, selective antagonist of the NPY-Y5 receptor, effectively inhibiting food consumption and curbing body weight gain in obese rodents. |
| Targets(IC50) | Neuropeptide Y Receptor |
| In vivo | GW438014A (10 mg/kg; i.p.; daily, for 7 days) inhibits spontaneous, overnight fasting-induced, and NPY-induced feeding in rats, as well as food-deprived genetically obese ob/ob mice.[2] |

Solubility Information

| | |
|------------|--|
| Solubility | DMSO: 225 mg/mL (514.27 mM), Sonication is recommended. (< 1 mg/ml refers to the product slightly soluble or insoluble) |
|------------|--|

Preparing Stock Solutions

| | 1mg | 5mg | 10mg |
|-------|-----------|------------|------------|
| 1 mM | 2.2857 mL | 11.4283 mL | 22.8566 mL |
| 5 mM | 0.4571 mL | 2.2857 mL | 4.5713 mL |
| 10 mM | 0.2286 mL | 1.1428 mL | 2.2857 mL |
| 50 mM | 0.0457 mL | 0.2286 mL | 0.4571 mL |

Please select the appropriate solvent to prepare the stock solution, according to the solubility of the product in different solvents. Please use it as soon as possible.

Note: The dilution table applies only to solid products. For liquid products, please calculate the stock solution based on the stated concentration and/or density.

Reference

Benmaamar R, et al. Neuropeptide Y Y5 receptors inhibit kindling acquisition in rats. Regul Pept. 2005 Feb 15;125(1-3):79-83.

Daniels AJ, et al. Food intake inhibition and reduction in body weight gain in lean and obese rodents treated with GW438014A, a potent and selective NPY-Y5 receptor antagonist. Regul Pept. 2002;106(1-3):47-54.

Inhibitor · Natural Compounds · Compound Libraries · Recombinant Proteins

This product is for Research Use Only · Not for Human or Veterinary or Therapeutic Use

Tel:781-999-4286 E_mail:info@targetmol.com Address:34 Washington Street,Wellesley Hills,MA 02481