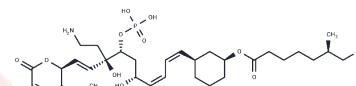


Leustroducsin B

Chemical Properties

CAS No. :	145142-82-1
Formula:	C ₃₄ H ₅₆ NO ₁₀ P
Molecular Weight:	669.78
Storage:	Powder: -20°C for 3 years In solvent: -80°C for 1 year Actual storage temperature shall be subject to the COA.



Biological Description

Description	Leustroducsin B is a novel colony-stimulating factor (CSF) inducer extracted from <i>Streptomyces platensis</i> SANK 60191.
Targets(IC50)	c-Fms,Others

Preparing Stock Solutions

	1mg	5mg	10mg
1 mM	1.493 mL	7.4651 mL	14.9303 mL
5 mM	0.2986 mL	1.493 mL	2.9861 mL
10 mM	0.1493 mL	0.7465 mL	1.493 mL
50 mM	0.0299 mL	0.1493 mL	0.2986 mL

Please select the appropriate solvent to prepare the stock solution, according to the solubility of the product in different solvents. Please use it as soon as possible.

Note: The dilution table applies only to solid products. For liquid products, please calculate the stock solution based on the stated concentration and/or density.

Reference

- Trost BM, Biannic B, Brindle CS, O'Keefe BM, Hunter TJ, Ngai MY. A Highly Convergent Total Synthesis of Leustroducsin B. *J Am Chem Soc.* 2015 Sep 16;137(36):11594-7. doi: 10.1021/jacs.5b07438. Epub 2015 Sep 1. PubMed PMID: 26313159; PubMed Central PMCID: PMC4621997.
- Greszler SN, Malinowski JT, Johnson JS. Formal synthesis of leustroducsin B via Reformatsky/Claisen condensation of silyl glyoxylates. *Org Lett.* 2011 Jun 17;13(12):3206-9. doi: 10.1021/ol2011192. Epub 2011 May 17. PubMed PMID: 21591684; PubMed Central PMCID: PMC3115596.
- Miyashita K, Tsunemi T, Hosokawa T, Ikejiri M, Imanishi T. Total synthesis of leustroducsin B. *J Org Chem.* 2008 Jul 18;73(14):5360-70. doi: 10.1021/jo8005599. Epub 2008 Jun 13. PubMed PMID: 18549287.
- Koishi R, Yoshimura C, Kohama T, Serizawa N. Leustroducsin B activates nuclear factor-kappaB via the acidic sphingomyelinase pathway in human bone marrow-derived stromal cell line KM-102. *J Interferon Cytokine Res.* 2002 Mar;22(3):343-50. PubMed PMID: 12034042.

Inhibitor · Natural Compounds · Compound Libraries · Recombinant Proteins

This product is for Research Use Only · Not for Human or Veterinary or Therapeutic Use

Tel:781-999-4286 E_mail:info@targetmol.com Address:34 Washington Street,Wellesley Hills,MA 02481