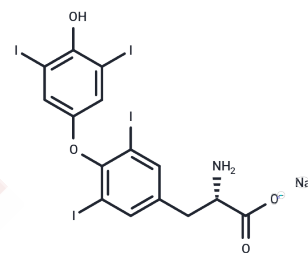


## L-Thyroxine sodium

## Chemical Properties

CAS No. :	55-03-8
Formula:	C <sub>15</sub> H <sub>10</sub> I <sub>4</sub> NO <sub>4</sub> .Na
Molecular Weight:	798.85
Storage:	Powder: -20°C for 3 years   In solvent: -80°C for 1 year Actual storage temperature shall be subject to the COA.



## Biological Description

Description	L-Thyroxine sodium (LT4 sodium), the major hormone derived from the thyroid gland, is the agonist of Thyroid hormone receptor alpha and beta.
Targets(IC50)	Endogenous Metabolite,Thyroid hormone receptor(THR)
In vitro	evothyroxine (L-T(4))can upregulate the expression of P-gp mRNA and protein in LS180 cells, but only L-T(4) and L-T(3) can produce the same effect in Caco-2 cells, which are relatively lacking in PXR[1]
Cell Research	Cell lines: LS180V cells. Concentrations: 100 nM and 100µM. Incubation Time: 72 h. Method: LS180V cells are induced for 72 h with two l-T4 concentrations of 100 nM and 100 µM.
Animal Research	Animal Models: SD rats. Dosages: 20 µg/kg/day and 100 µg/kg/day. Administration: i. p.

## Solubility Information

Solubility	DMSO: 82.5 mg/mL (103.27 mM),Sonication is recommended. (< 1 mg/ml refers to the product slightly soluble or insoluble)
In vivo Formulation	10% DMSO+40% PEG300+5% Tween 80+45% Saline: 2 mg/mL (2.5 mM),Sonication is recommended. <i>Please add the solvents sequentially, clarifying the solution as much as possible before adding the next one. Dissolve by heating and/or sonication if necessary. Working solution is recommended to be prepared and used immediately. The formulation provided above is for reference purposes only. In vivo formulations may vary and should be modified based on specific experimental conditions.</i>

### Preparing Stock Solutions

---

	<b>1mg</b>	<b>5mg</b>	<b>10mg</b>
1 mM	1.2518 mL	6.259 mL	12.518 mL
5 mM	0.2504 mL	1.2518 mL	2.5036 mL
10 mM	0.1252 mL	0.6259 mL	1.2518 mL
50 mM	0.025 mL	0.1252 mL	0.2504 mL

---

Please select the appropriate solvent to prepare the stock solution, according to the solubility of the product in different solvents. Please use it as soon as possible.

Note: The dilution table applies only to solid products. For liquid products, please calculate the stock solution based on the stated concentration and/or density.

**Inhibitor · Natural Compounds · Compound Libraries · Recombinant Proteins**

This product is for Research Use Only · Not for Human or Veterinary or Therapeutic Use

Tel:781-999-4286 E\_mail:info@targetmol.com Address:34 Washington Street,Wellesley Hills,MA 02481