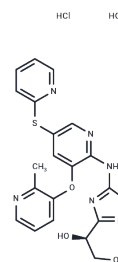


## AMG151 HCl

## Chemical Properties

CAS No. :	1609674-80-7
Formula:	C <sub>20</sub> H <sub>20</sub> Cl <sub>2</sub> N <sub>6</sub> O <sub>3</sub> S <sub>2</sub>
Molecular Weight:	527.439
Storage:	Powder: -20°C for 3 years   In solvent: -80°C for 1 year Actual storage temperature shall be subject to the COA.



## Biological Description

Description	ARRY-403, also known as AMG-151, is an orally available allosteric glucokinase (GK) activator developed for the treatment of type 2 diabetes mellitus (T2DM). ARRY-403 has many favorable physicochemical characteristics and ADME properties (low potential to cause drug-drug interactions (DDIs)). ARRY-403 potently activates human glucokinase (GK) in vitro (EC <sub>50</sub> = 79 nM at 5 mM glucose), with an S <sub>0.5</sub> = 0.93 mM glucose (ARRY-403 at 5 mM) and V <sub>max</sub> = 134% compared to the no activator control. It possesses good in vitro drug-like properties (aqueous solubility, cell permeability, low low potential for drug-drug interactions, low predicted hepatic clearance), and selectivity against broad panels of receptors and enzymes.
Targets(IC50)	Others

## Preparing Stock Solutions

	1mg	5mg	10mg
1 mM	1.896 mL	9.4798 mL	18.9595 mL
5 mM	0.3792 mL	1.896 mL	3.7919 mL
10 mM	0.1896 mL	0.948 mL	1.896 mL
50 mM	0.0379 mL	0.1896 mL	0.3792 mL

Please select the appropriate solvent to prepare the stock solution, according to the solubility of the product in different solvents. Please use it as soon as possible.

Note: The dilution table applies only to solid products. For liquid products, please calculate the stock solution based on the stated concentration and/or density.

**Inhibitor · Natural Compounds · Compound Libraries · Recombinant Proteins**

This product is for Research Use Only · Not for Human or Veterinary or Therapeutic Use

Tel:781-999-4286 E\_mail:info@targetmol.com Address:34 Washington Street,Wellesley Hills,MA 02481