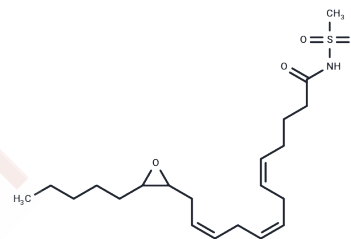


(±)14(15)-EET-SI

Chemical Properties

CAS No. : 218461-97-3
 Formula: C₂₁H₃₅NO₄S
 Molecular Weight: 397.57
 Storage: Powder: -20°C for 3 years | In solvent: -80°C for 1 year
 Actual storage temperature shall be subject to the COA.



Biological Description

Description	Arachidonic acid is metabolized in the vascular endothelium to epoxytrienoic acids (EETs or EpETrEs) by cytochrome P450 enzymes. The EETs are released in response to acetylcholine, bradykinin, arachidonic acid, or cyclic stretch. (±)14(15)-EET-SI is the methyl sulfonamide analog of 14(15)-EET. This substitution results in a metabolically more stable compound because it is not sensitive to β-oxidation or membrane esterification. (±)14(15)-EET-SI is equipotent to 14(15)-EET in vascular agonist activity as measured by relaxation of precontracted bovine coronary arteries. In addition, 14(15)-EET and the methyl sulfonamide analog both stimulate tyrosine phosphorylation and induce mitogenesis in renal epithelial cells.
Targets(IC ₅₀)	Others

Solubility Information

Solubility	DMSO: 10 mg/mL (25.15 mM), Sonication is recommended. Ethanol:PBS (pH 7.2) (1:2): 0.3 mg/mL (0.75 mM), Sonication is recommended. Ethanol: 10 mg/mL (25.15 mM), Sonication is recommended. DMF: 10 mg/mL (25.15 mM), Sonication is recommended. (< 1 mg/ml refers to the product slightly soluble or insoluble)
------------	---

Preparing Stock Solutions

	1mg	5mg	10mg
1 mM	2.5153 mL	12.5764 mL	25.1528 mL
5 mM	0.5031 mL	2.5153 mL	5.0306 mL
10 mM	0.2515 mL	1.2576 mL	2.5153 mL
50 mM	0.0503 mL	0.2515 mL	0.5031 mL

Please select the appropriate solvent to prepare the stock solution, according to the solubility of the product in different solvents. Please use it as soon as possible.

Note: The dilution table applies only to solid products. For liquid products, please calculate the stock solution based on the stated concentration and/or density.

Inhibitor · Natural Compounds · Compound Libraries · Recombinant Proteins

This product is for Research Use Only · Not for Human or Veterinary or Therapeutic Use

Tel:781-999-4286 E_mail:info@targetmol.com Address:34 Washington Street,Wellesley Hills,MA 02481