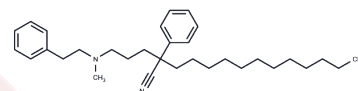


Ronipamil

Chemical Properties

CAS No. :	85247-77-4
Formula:	C32H48N2
Molecular Weight:	460.74
Storage:	Powder: -20°C for 3 years In solvent: -80°C for 1 year Actual storage temperature shall be subject to the COA.



Biological Description

Description	Ronipamil is an analogue of verapamil that used as a calcium entry blocker.
Targets(IC50)	Others, Calcium Channel

Preparing Stock Solutions

	1mg	5mg	10mg
1 mM	2.1704 mL	10.8521 mL	21.7042 mL
5 mM	0.4341 mL	2.1704 mL	4.3408 mL
10 mM	0.217 mL	1.0852 mL	2.1704 mL
50 mM	0.0434 mL	0.217 mL	0.4341 mL

Please select the appropriate solvent to prepare the stock solution, according to the solubility of the product in different solvents. Please use it as soon as possible.

Note: The dilution table applies only to solid products. For liquid products, please calculate the stock solution based on the stated concentration and/or density.

Reference

- Lefler AM, Papanicolaou G. Beneficial actions of two novel calcium entry blockers in the isolated perfused hypoxic cat liver. *Methods Find Exp Clin Pharmacol*. 1985 Feb;7(2):59-63. PubMed PMID: 3838786.
- Curtis MJ, Walker MJ, Yuswack T. Actions of the verapamil analogues, anipamil and ronipamil, against ischaemia-induced arrhythmias in conscious rats. *Br J Pharmacol*. 1986 Jun;88(2):355-61. PubMed PMID: 3755364; PubMed Central PMCID: PMC1916825.
- Hock CE, Daitch JS, Lefler AM. Salutary effects of two verapamil analogs in traumatic shock. *Pharm Res*. 1985 May;2(3):130-4. doi: 10.1023/A:1016363316777. PubMed PMID: 24272690.
- Dumont L, Williams JS, Vaghy PL, Schwartz A. Characteristics of the phenylalkylamine binding site in canine cardiac sarcolemmal membranes. *Basic Res Cardiol*. 1988 Jul-Aug;83(4):369-75. PubMed PMID: 2847707.

Inhibitor · Natural Compounds · Compound Libraries · Recombinant Proteins

This product is for Research Use Only · Not for Human or Veterinary or Therapeutic Use

Tel:781-999-4286 E_mail:info@targetmol.com Address:34 Washington Street,Wellesley Hills,MA 02481