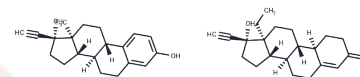


## Ethinylestradiol mixture with Levonorgestrel

### Chemical Properties

CAS No. :	39366-37-5
Formula:	C <sub>41</sub> H <sub>52</sub> O <sub>4</sub>
Molecular Weight:	608.863
Storage:	Powder: -20°C for 3 years   In solvent: -80°C for 1 year Actual storage temperature shall be subject to the COA.



### Biological Description

Description	Ethinylestradiol mixture with Levonorgestrel is formulated with increasing dosages of levonorgestrel and ethinyl estradiol.
Targets(IC50)	Others

### Preparing Stock Solutions

	1mg	5mg	10mg
1 mM	1.6424 mL	8.2121 mL	16.4241 mL
5 mM	0.3285 mL	1.6424 mL	3.2848 mL
10 mM	0.1642 mL	0.8212 mL	1.6424 mL
50 mM	0.0328 mL	0.1642 mL	0.3285 mL

Please select the appropriate solvent to prepare the stock solution, according to the solubility of the product in different solvents. Please use it as soon as possible.

Note: The dilution table applies only to solid products. For liquid products, please calculate the stock solution based on the stated concentration and/or density.

### Reference

Thrupp TJ, Runnalls TJ, Scholze M, Kugathas S, Kortenkamp A, Sumpter JP. The consequences of exposure to mixtures of chemicals: Something from 'nothing' and 'a lot from a little' when fish are exposed to steroid hormones. *Sci Total Environ.* 2018 Apr 1;619-620:1482-1492. doi: 10.1016/j.scitotenv.2017.11.081. Epub 2017 Dec 1. PubMed PMID: 29734624.

Yarahmadi H, Duy SV, Hachad M, Dorner S, Sauvé S, Prévost M. Seasonal variations of steroid hormones released by wastewater treatment plants to river water and sediments: Distribution between particulate and dissolved phases. *Sci Total Environ.* 2018 Sep 1;635:144-155. doi: 10.1016/j.scitotenv.2018.03.370. Epub 2018 Apr 13. PubMed PMID: 29660718.

Hinfray N, Tebby C, Garoche C, Piccini B, Bourguine G, Aït-Aïssa S, Kah O, Pakdel F, Brion F. Additive effects of levonorgestrel and ethinylestradiol on brain aromatase (cyp19a1b) in zebrafish specific in vitro and in vivo bioassays. *Toxicol Appl Pharmacol.* 2016 Sep 15;307:108-114. doi: 10.1016/j.taap.2016.07.023. Epub 2016 Aug 1. PubMed PMID: 27491593.

Runnalls TJ, Beresford N, Kugathas S, Margiotta-Casaluci L, Scholze M, Scott AP, Sumpter JP. From single chemicals to mixtures--reproductive effects of levonorgestrel and ethinylestradiol on the fathead minnow. *Aquat Toxicol.* 2015 Dec;169:152-67. doi: 10.1016/j.aquatox.2015.10.009. Epub 2015 Oct 17. PubMed PMID: 26551686.

**Inhibitor · Natural Compounds · Compound Libraries · Recombinant Proteins**

This product is for Research Use Only · Not for Human or Veterinary or Therapeutic Use

Tel:781-999-4286 E\_mail:info@targetmol.com Address:34 Washington Street,Wellesley Hills,MA 02481