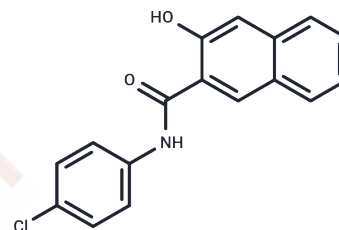


## Naphthol AS-E

## Chemical Properties

CAS No. :	92-78-4
Formula:	C <sub>17</sub> H <sub>12</sub> ClNO <sub>2</sub>
Molecular Weight:	297.74
Storage:	Powder: -20°C for 3 years   In solvent: -80°C for 1 year Actual storage temperature shall be subject to the COA.



## Biological Description

Description	Naphthol AS-E (nAS-E) is an the KIX-KID interaction and CREB-mediated gene transcription inhibitor.
Targets(IC50)	Epigenetic Reader Domain,Histone Acetyltransferase
In vivo	nAS-E could reverse bone loss induced by MDA-MB-231 tumour. These results suggest that small molecules targeting CREB-CBP interaction to inhibit CREB-mediated gene transcription might be a potential approach for the treatment of breast cancer bone metastasis[1].

## Solubility Information

Solubility	DMSO: 2.98 mg/mL (10.01 mM),Sonication is recommended. (< 1 mg/ml refers to the product slightly soluble or insoluble)
------------	---

## Preparing Stock Solutions

	1mg	5mg	10mg
1 mM	3.3586 mL	16.7932 mL	33.5864 mL
5 mM	0.6717 mL	3.3586 mL	6.7173 mL
10 mM	0.3359 mL	1.6793 mL	3.3586 mL
50 mM	0.0672 mL	0.3359 mL	0.6717 mL

Please select the appropriate solvent to prepare the stock solution, according to the solubility of the product in different solvents. Please use it as soon as possible.

Note: The dilution table applies only to solid products. For liquid products, please calculate the stock solution based on the stated concentration and/or density.

Reference

Jiang M , Yan Y , Yang K , et al. Small molecule nAS-E targeting cAMP response element binding protein (CREB) and CREB-binding protein interaction inhibits breast cancer bone metastasis[J]. Journal of Cellular and Molecular Medicine, 2018, 23(2).

Andrade C F U D , Mirian W , Da F C D , et al. Nursing Activities Score and Acute Kidney Injury[J]. Revista Brasileira De Enfermagem, 2017, 70(3):475-480.

**Inhibitor · Natural Compounds · Compound Libraries · Recombinant Proteins**

This product is for Research Use Only· Not for Human or Veterinary or Therapeutic Use

Tel:781-999-4286 E\_mail:info@targetmol.com Address:34 Washington Street,Wellesley Hills,MA 02481