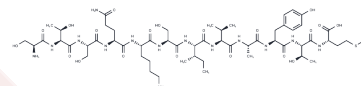


SP 10

Chemical Properties

CAS No. : 882157-88-2
 Formula: C56H94N14O20S
 Molecular Weight: 1315.51
 Storage: Keep away from moisture
 Powder: -20°C for 3 years | In solvent: -80°C for 1 year
 Actual storage temperature shall be subject to the COA.



Biological Description

| | |
|---------------|---|
| Description | Peptide originally derived from SARS-CoV Spike (S) protein; corresponds to amino acid residues 668 to 679. Highly potent inhibitor of SARS-CoV S protein and ACE2 interaction (IC50 = 1.88 nM in biochemical assay). Inhibits interaction of SARS-CoV S protein and Vero E6 cells in vitro. Please note, this peptide displays 80% sequence identity to homologous site on SARS-CoV-2 S-protein (residues 689-697). |
| Targets(IC50) | Cholinesterase (ChE) |

Preparing Stock Solutions

| | 1mg | 5mg | 10mg |
|-------|-----------|-----------|-----------|
| 1 mM | 0.7602 mL | 3.8008 mL | 7.6016 mL |
| 5 mM | 0.152 mL | 0.7602 mL | 1.5203 mL |
| 10 mM | 0.076 mL | 0.3801 mL | 0.7602 mL |
| 50 mM | 0.0152 mL | 0.076 mL | 0.152 mL |

Please select the appropriate solvent to prepare the stock solution, according to the solubility of the product in different solvents. Please use it as soon as possible.

Note: The dilution table applies only to solid products. For liquid products, please calculate the stock solution based on the stated concentration and/or density.

Inhibitor · Natural Compounds · Compound Libraries · Recombinant Proteins

This product is for Research Use Only · Not for Human or Veterinary or Therapeutic Use

Tel: 781-999-4286 E_mail: info@targetmol.com Address: 34 Washington Street, Wellesley Hills, MA 02481