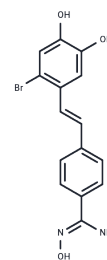


LSD1-IN-6

Chemical Properties

CAS No. :	2035912-43-5
Formula:	C ₁₅ H ₁₃ BrN ₂ O ₃
Molecular Weight:	349.18
Storage:	Powder: -20°C for 3 years In solvent: -80°C for 1 year Actual storage temperature shall be subject to the COA.



Biological Description

Description	LSD1-IN-6 increases dimethylated Lys4 of histone H3, shows no effect on expression of LSD1. LSD1-IN-6 is a potent and reversible inhibitor of lysine-specific demethylase 1 (LSD1), with an IC ₅₀ of 123 nM.
Targets(IC ₅₀)	Histone Demethylase

Preparing Stock Solutions

	1mg	5mg	10mg
1 mM	2.8639 mL	14.3193 mL	28.6385 mL
5 mM	0.5728 mL	2.8639 mL	5.7277 mL
10 mM	0.2864 mL	1.4319 mL	2.8639 mL
50 mM	0.0573 mL	0.2864 mL	0.5728 mL

Please select the appropriate solvent to prepare the stock solution, according to the solubility of the product in different solvents. Please use it as soon as possible.

Note: The dilution table applies only to solid products. For liquid products, please calculate the stock solution based on the stated concentration and/or density.

Reference

Duan YC, et al. Discovery of resveratrol derivatives as novel LSD1 inhibitors: Design, synthesis and their biological evaluation. Eur J Med Chem. 2017 Jan 27;126:246-258.

Inhibitor · Natural Compounds · Compound Libraries · Recombinant Proteins

This product is for Research Use Only · Not for Human or Veterinary or Therapeutic Use

Tel:781-999-4286 E_mail:info@targetmol.com Address:34 Washington Street,Wellesley Hills,MA 02481