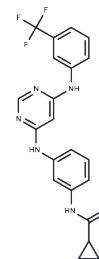


EGFR-IN-12

Chemical Properties

CAS No. :	879127-07-8
Formula:	C ₂₁ H ₁₈ F ₃ N ₅ O
Molecular Weight:	413.4
Storage:	Powder: -20°C for 3 years In solvent: -80°C for 1 year Actual storage temperature shall be subject to the COA.



Biological Description

Description	EGFR-IN-12 (EGFR Inhibitor) is a cell permeable and selective inhibitor of EGFR kinase (IC ₅₀ : 21 nM) and blocks receptor autophosphorylation in cells.
Targets(IC ₅₀)	Apoptosis,EGFR
In vitro	EGFR Inhibitor possesses an enzymatic IC ₅₀ = 21 nM against EGFR kinase in vitro and blocks receptor autophosphorylation in cells. EGFR Inhibitor also potently inhibits two EGFR mutants associated with clinical response to gefitinib: L858R (IC ₅₀ : 63 nM) and L861Q (IC ₅₀ : 4 nM), but displays much weaker activity against Her 4 (IC ₅₀ : 7640 nM).

Solubility Information

Solubility	Ethanol: 10 mg/mL (24.19 mM),Sonication is recommended. DMSO: 50 mg/mL (120.95 mM),Sonication is recommended. (< 1 mg/ml refers to the product slightly soluble or insoluble)
------------	---

Preparing Stock Solutions

	1mg	5mg	10mg
1 mM	2.419 mL	12.0948 mL	24.1896 mL
5 mM	0.4838 mL	2.419 mL	4.8379 mL
10 mM	0.2419 mL	1.2095 mL	2.419 mL
50 mM	0.0484 mL	0.2419 mL	0.4838 mL

Please select the appropriate solvent to prepare the stock solution, according to the solubility of the product in different solvents. Please use it as soon as possible.

Note: The dilution table applies only to solid products. For liquid products, please calculate the stock solution based on the stated concentration and/or density.

Reference

Zhang Q, et al. Discovery of EGFR selective 4,6-disubstituted pyrimidines from a combinatorial kinase-directed heterocycle library. J Am Chem Soc. 2006 Feb 22;128(7):2182-3.

He X Y, Yang Y S, Zheng Y X, et al. Scutellarin combined with lidocaine exerts antineoplastic effect in human glioma associated with repression of epidermal growth factor receptor signaling. PloS one. 2015, 20(1): e0318031.

Inhibitor · Natural Compounds · Compound Libraries · Recombinant Proteins

This product is for Research Use Only · Not for Human or Veterinary or Therapeutic Use

Tel: 781-999-4286 E_mail: info@targetmol.com Address: 34 Washington Street, Wellesley Hills, MA 02481