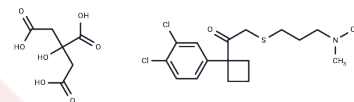


## SPD-473 citrate

## Chemical Properties

CAS No. :	161190-26-7
Formula:	C <sub>23</sub> H <sub>31</sub> Cl <sub>2</sub> N <sub>2</sub> O <sub>8</sub> S
Molecular Weight:	552.47
Storage:	Powder: -20°C for 3 years   In solvent: -80°C for 1 year Actual storage temperature shall be subject to the COA.



## Biological Description

Description	SPD-473 citrate (BTS 74398 citrate) is a dopamine reuptake inhibitor, a norepinephrine transporter protein (NET) inhibitor, and a 5-hydroxytryptamine reuptake inhibitor, and is used in the study of neurological disorders and endocrine and metabolic diseases.
Targets(IC50)	5-HT Receptor, Norepinephrine, Dopamine Receptor, Serotonin Transporter
In vitro	SPD-473 inhibits the synaptic reuptake of dopamine, serotonin, and noradrenaline, making it a potential triple reuptake inhibitor that can be used to treat Parkinson's disease.

## Preparing Stock Solutions

	1mg	5mg	10mg
1 mM	1.8101 mL	9.0503 mL	18.1005 mL
5 mM	0.362 mL	1.8101 mL	3.6201 mL
10 mM	0.181 mL	0.905 mL	1.8101 mL
50 mM	0.0362 mL	0.181 mL	0.362 mL

Please select the appropriate solvent to prepare the stock solution, according to the solubility of the product in different solvents. Please use it as soon as possible.

Note: The dilution table applies only to solid products. For liquid products, please calculate the stock solution based on the stated concentration and/or density.

## Reference

- Lane EL, et al. Does contraversive circling in the 6-OHDA-lesioned rat indicate an ability to induce motor complications as well as therapeutic effects in Parkinson's disease? *Exp Neurol*. 2006 Feb;197(2):284-90.
- Lane EL, et al. Dopamine uptake inhibitor-induced rotation in 6-hydroxydopamine-lesioned rats involves both D1 and D2 receptors but is modulated through 5-hydroxytryptamine and noradrenaline receptors. *J Pharmacol Exp Ther*. 2005 Mar;312(3):1124-31.

**Inhibitor · Natural Compounds · Compound Libraries · Recombinant Proteins**

This product is for Research Use Only · Not for Human or Veterinary or Therapeutic Use

Tel:781-999-4286 E\_mail:info@targetmol.com Address:34 Washington Street,Wellesley Hills,MA 02481