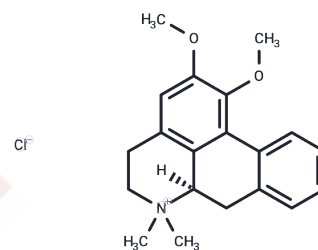


N-Methylnuciferine

Chemical Properties

CAS No. :	754919-24-9
Formula:	C ₂₀ H ₂₄ N ₂ O ₂
Molecular Weight:	310.41
Storage:	Keep away from moisture, Keep away from direct sunlight Powder: -20°C for 3 years In solvent: -80°C for 1 year <small>Actual storage temperature shall be subject to the COA.</small>



Biological Description

Description	N-Methylnuciferine is an alkaloid derived from Lotus Plumule that ameliorates lipopolysaccharide-induced depressive-like behavior.
Targets(IC50)	Others

Solubility Information

Solubility	Chloroform, Dichloromethane, Ethyl Acetate, Acetone, etc.: Soluble, DMSO: 65 mg/mL (209.4 mM), Sonication is recommended. (< 1 mg/ml refers to the product slightly soluble or insoluble)
------------	---

Preparing Stock Solutions

	1mg	5mg	10mg
1 mM	3.2215 mL	16.1077 mL	32.2155 mL
5 mM	0.6443 mL	3.2215 mL	6.4431 mL
10 mM	0.3222 mL	1.6108 mL	3.2215 mL
50 mM	0.0644 mL	0.3222 mL	0.6443 mL

Please select the appropriate solvent to prepare the stock solution, according to the solubility of the product in different solvents. Please use it as soon as possible.

Note: The dilution table applies only to solid products. For liquid products, please calculate the stock solution based on the stated concentration and/or density.

Inhibitor · Natural Compounds · Compound Libraries · Recombinant Proteins

This product is for Research Use Only · Not for Human or Veterinary or Therapeutic Use

Tel: 781-999-4286 E_mail: info@targetmol.com Address: 34 Washington Street, Wellesley Hills, MA 02481