

CW 008

Chemical Properties

CAS No. : 1134613-19-6

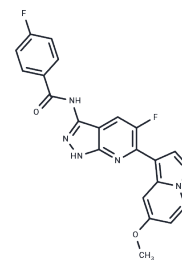
Formula: C₂₁H₁₄F₂N₆O₂

Molecular Weight: 420.37

Store at low temperature

Storage: Powder: -20°C for 3 years | In solvent: -80°C for 1 year

Actual storage temperature shall be subject to the COA.



Biological Description

Description	CW 008 is an agonist of the cAMP/PKA/CREB pathway, promoting osteogenic differentiation of bone marrow-derived mesenchymal stem cells (MSCs), inhibiting leptin secretion, and enhancing alkaline phosphatase (ALP) activity. It is also regarded as a PKA activator in experimental studies.
Targets(IC50)	cAMP, Epigenetic Reader Domain, Phosphorylase, PKA

Solubility Information

Solubility	DMSO: 12 mg/mL (28.55 mM), Sonication is recommended. (< 1 mg/ml refers to the product slightly soluble or insoluble)
------------	---

Preparing Stock Solutions

	1mg	5mg	10mg
1 mM	2.3789 mL	11.8943 mL	23.7886 mL
5 mM	0.4758 mL	2.3789 mL	4.7577 mL
10 mM	0.2379 mL	1.1894 mL	2.3789 mL
50 mM	0.0476 mL	0.2379 mL	0.4758 mL

Please select the appropriate solvent to prepare the stock solution, according to the solubility of the product in different solvents. Please use it as soon as possible.

Note: The dilution table applies only to solid products. For liquid products, please calculate the stock solution based on the stated concentration and/or density.

Reference

Kim JM, et al. An activator of the cAMP/PKA/CREB pathway promotes osteogenesis from human mesenchymal stem cells. J Cell Physiol. 2013 Mar;228(3):617-26.

Inhibitor · Natural Compounds · Compound Libraries · Recombinant Proteins

This product is for Research Use Only · Not for Human or Veterinary or Therapeutic Use

Tel:781-999-4286 E_mail:info@targetmol.com Address:34 Washington Street,Wellesley Hills,MA 02481