

## Complanatuside

## Chemical Properties

CAS No. : 116183-66-5

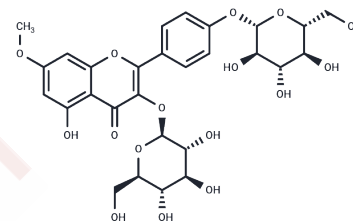
Formula: C<sub>28</sub>H<sub>32</sub>O<sub>16</sub>

Molecular Weight: 624.54

Keep away from direct sunlight

Storage: Powder: -20°C for 3 years | In solvent: -80°C for 1 year

Actual storage temperature shall be subject to the COA.



## Biological Description

Description	Complanatuside (Complanatoside) is a flavonoid isolated from the traditional Chinese medicine Semen Astragali Complanati.
Targets(IC50)	Others
In vitro	Semen Astragali Complanati (SAC), the dried ripe seed of Flatstem Milkvech ( <i>Astragalus complanatus</i> Bunge), is extensively used in traditional Chinese medicine to treat disorders of the muscles, liver, kidneys, blood, skin, and reproductive system. Containing fatty acids, amino acids, polysaccharides, flavonoids, triterpene glycosides, and trace elements, SAC is particularly effective for chronic conditions like cardiovascular diseases, diabetes mellitus, and cancers, with flavonoids being recognized as the main bioactive constituents responsible for its therapeutic properties.

## Solubility Information

Solubility	DMSO: 50 mg/mL (80.06 mM), Sonication is recommended. (< 1 mg/ml refers to the product slightly soluble or insoluble)
------------	--

### Preparing Stock Solutions

---

	<b>1mg</b>	<b>5mg</b>	<b>10mg</b>
1 mM	1.6012 mL	8.0059 mL	16.0118 mL
5 mM	0.3202 mL	1.6012 mL	3.2024 mL
10 mM	0.1601 mL	0.8006 mL	1.6012 mL
50 mM	0.032 mL	0.1601 mL	0.3202 mL

---

Please select the appropriate solvent to prepare the stock solution, according to the solubility of the product in different solvents. Please use it as soon as possible.

Note: The dilution table applies only to solid products. For liquid products, please calculate the stock solution based on the stated concentration and/or density.

### Reference

Ng YF, et al. Semen Astragali Complanati: an ethnopharmacological, phytochemical and pharmacological review. J Ethnopharmacol. 2014 Aug 8;155(1):39-53.

**Inhibitor · Natural Compounds · Compound Libraries · Recombinant Proteins**

This product is for Research Use Only · Not for Human or Veterinary or Therapeutic Use

Tel:781-999-4286 E\_mail:info@targetmol.com Address:34 Washington Street,Wellesley Hills,MA 02481