

type I hair keratin fragment [Homo sapiens]/[Ovis aries]/[Rattus norvegicus]

Chemical Properties

CAS No. :

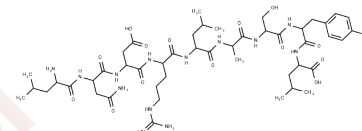
Formula: C47H77N13O15

Molecular Weight: 1064.19

Keep away from moisture

Storage: Powder: -20°C for 3 years | In solvent: -80°C for 1 year

Actual storage temperature shall be subject to the COA.



Biological Description

Description	The human type I hair keratin subfamily comprises nine individual members, which can be subdivided into three groups. Group A (hHa1, hHa3-I, hHa3-II, hHa4) and B (hHa7, hHa8) each contains structurally related hair keratins, whereas group C members hHa2, hHa5, and hHa6 represent structurally rather unrelated hair keratins ¹ .
Targets(IC50)	Others
In vitro	Keratins are divided into type I (acidic) and type II (basic to neutral) members, which form the 10-nm intermediate filament cytoskeletal network of epithelial cells through the obligatory association of equimolar amounts of type I and type II keratins [2][3][4].
In vivo	The various type I hair keratin antibodies proved to be highly specific in that they recognized only single protein bands when analyzed in Western blots of one-dimensionally resolved human hair keratins. One exception concerned the hHa2 antibody, which besides the prominent hHa2 protein band also reacted with a slightly larger minor band ¹ . A LEF-1 consensus sequence is invariably located at a highly conserved position in the proximal promoter region of the members of the human type I hair keratin family but it is specifically lacking in the entire promoter of the hHa7 gene ⁵ .

Solubility Information

Solubility	DMSO: ≥106.4 mg/mL, Sonication is recommended. (< 1 mg/ml refers to the product slightly soluble or insoluble)
------------	---

Preparing Stock Solutions

	1mg	5mg	10mg
1 mM	0.9397 mL	4.6984 mL	9.3968 mL
5 mM	0.1879 mL	0.9397 mL	1.8794 mL
10 mM	0.094 mL	0.4698 mL	0.9397 mL
50 mM	0.0188 mL	0.094 mL	0.1879 mL

Please select the appropriate solvent to prepare the stock solution, according to the solubility of the product in different solvents. Please use it as soon as possible.

Note: The dilution table applies only to solid products. For liquid products, please calculate the stock solution based on the stated concentration and/or density.

Inhibitor · Natural Compounds · Compound Libraries · Recombinant Proteins

This product is for Research Use Only · Not for Human or Veterinary or Therapeutic Use

Tel:781-999-4286 E_mail:info@targetmol.com Address:34 Washington Street,Wellesley Hills,MA 02481