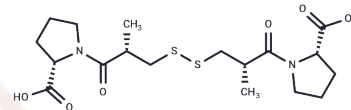


## Captopril disulfide

## Chemical Properties

CAS No. : 64806-05-9  
 Formula: C<sub>18</sub>H<sub>28</sub>N<sub>2</sub>O<sub>6</sub>S<sub>2</sub>  
 Molecular Weight: 432.56  
 Storage: Powder: -20°C for 3 years | In solvent: -80°C for 1 year  
 Actual storage temperature shall be subject to the COA.



## Biological Description

Description	Captopril disulfide, a metabolite of Captopril, is a new antihypertensive agent.
Targets(IC50)	Others,Angiotensin-converting Enzyme (ACE)

## Solubility Information

Solubility	DMSO: Soluble, (< 1 mg/ml refers to the product slightly soluble or insoluble)
------------	---

## Preparing Stock Solutions

	1mg	5mg	10mg
1 mM	2.3118 mL	11.5591 mL	23.1182 mL
5 mM	0.4624 mL	2.3118 mL	4.6236 mL
10 mM	0.2312 mL	1.1559 mL	2.3118 mL
50 mM	0.0462 mL	0.2312 mL	0.4624 mL

Please select the appropriate solvent to prepare the stock solution, according to the solubility of the product in different solvents. Please use it as soon as possible.

Note: The dilution table applies only to solid products. For liquid products, please calculate the stock solution based on the stated concentration and/or density.

### Reference

- Bojarska J, Maniukiewicz W, Fruziński A, Sieroń L, Remko M. Captopril and its dimer captopril disulfide: comparative structural and conformational studies. *Acta Crystallogr C Struct Chem*. 2015 Mar;71(Pt 3):199-203. doi: 10.1107/S2053229615002582. Epub 2015 Feb 18. PubMed PMID: 25734850.
- Mahmoud WM, Kümmerer K. Captopril and its dimer captopril disulfide: photodegradation, aerobic biodegradation and identification of transformation products by HPLC-UV and LC-ion trap-MS(n). *Chemosphere*. 2012 Aug;88(10):1170-7. doi: 10.1016/j.chemosphere.2012.03.064. Epub 2012 Apr 24. PubMed PMID: 22534199.
- Drummer OH, Jarrott B. Captopril disulfide conjugates may act as prodrugs: disposition of the disulfide dimer of captopril in the rat. *Biochem Pharmacol*. 1984 Nov 15;33(22):3567-71. PubMed PMID: 6095854.
- Bathala MS, Weinstein SH, Meeker FS Jr, Singhvi SM, Migdalof BH. Quantitative determination of captopril in blood and captopril and its disulfide metabolites in plasma by gas chromatography. *J Pharm Sci*. 1984 Mar;73(3):340-4. PubMed PMID: 6371216.

**Inhibitor · Natural Compounds · Compound Libraries · Recombinant Proteins**

This product is for Research Use Only · Not for Human or Veterinary or Therapeutic Use

Tel:781-999-4286 E\_mail:info@targetmol.com Address:34 Washington Street,Wellesley Hills,MA 02481