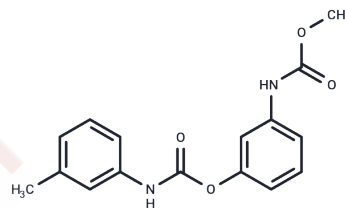


Phenmedipham

Chemical Properties

CAS No. :	13684-63-4
Formula:	C ₁₆ H ₁₆ N ₂ O ₄
Molecular Weight:	300.31
Storage:	Powder: -20°C for 3 years Actual storage temperature shall be subject to the COA.



Biological Description

Description	Phenmedipham (Fenmedifam) is a herbicide commonly used in the growth of sugar beets and strawberries.
Targets(IC50)	Others

Solubility Information

Solubility	DMSO: 55 mg/mL (183.14 mM), Sonication is recommended. (< 1 mg/ml refers to the product slightly soluble or insoluble)
------------	---

Preparing Stock Solutions

	1mg	5mg	10mg
1 mM	3.3299 mL	16.6495 mL	33.2989 mL
5 mM	0.666 mL	3.3299 mL	6.6598 mL
10 mM	0.333 mL	1.6649 mL	3.3299 mL
50 mM	0.0666 mL	0.333 mL	0.666 mL

Please select the appropriate solvent to prepare the stock solution, according to the solubility of the product in different solvents. Please use it as soon as possible.

Note: The dilution table applies only to solid products. For liquid products, please calculate the stock solution based on the stated concentration and/or density.

Reference

Schettgen T, Weiss T, Angerer J. Biological monitoring of phenmedipham: determination of m-toluidine in urine. Arch Toxicol. 2001 May;75(3):145-9.

Pohlenz HD, et al. Purification and properties of an *Arthrobacter oxydans* P52 carbamate hydrolase specific for the herbicide phenmedipham and nucleotide sequence of the corresponding gene. J Bacteriol. 1992 Oct;174(20):6600-7.

Howcroft CF, et al. Biochemical characterization of cholinesterases in *Enchytraeus albidus* and assessment of in vivo and in vitro effects of different soil properties, copper and phenmedipham. Ecotoxicology. 2011 Jan;20(1):119-30.

Imazawa T, et al. [Analysis of phenmedipham in agricultural products by HPLC]. Shokuhin Eiseigaku Zasshi. 2005 Dec;46(6):277-81. Japanese.

Inhibitor · Natural Compounds · Compound Libraries · Recombinant Proteins

This product is for Research Use Only· Not for Human or Veterinary or Therapeutic Use

Tel:781-999-4286 E_mail:info@targetmol.com Address:34 Washington Street,Wellesley Hills,MA 02481