

## Napitane

## Chemical Properties

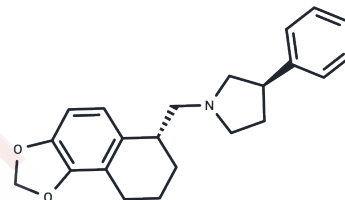
CAS No. : 148152-63-0

Formula: C<sub>22</sub>H<sub>25</sub>NO<sub>2</sub>

Molecular Weight: 335.44

Storage: Pure form: -20°C for 3 years | In solvent: -80°C for 1 year

Actual storage temperature shall be subject to the COA.



## Biological Description

Description	napitane (A 75200) is a novel catecholamine uptake inhibitor with inhibitory effects on $\alpha$ -adrenergic receptors and potential antidepressant activity for the study of depression.
Targets(IC <sub>50</sub> )	Adrenergic Receptor

## Preparing Stock Solutions

	1mg	5mg	10mg
1 mM	2.9812 mL	14.9058 mL	29.8116 mL
5 mM	0.5962 mL	2.9812 mL	5.9623 mL
10 mM	0.2981 mL	1.4906 mL	2.9812 mL
50 mM	0.0596 mL	0.2981 mL	0.5962 mL

Please select the appropriate solvent to prepare the stock solution, according to the solubility of the product in different solvents. Please use it as soon as possible.

Note: The dilution table applies only to solid products. For liquid products, please calculate the stock solution based on the stated concentration and/or density.

## Reference

Firestone JA, et al. Actions of A-75200, a novel catecholamine uptake inhibitor, on norepinephrine uptake and release from bovine adrenal chromaffin cells. *J Pharmacol Exp Ther.* 1993 Mar;264(3):1206-10.

Ferrero JL, et al. Implication of P450-metabolite complex formation in the nonlinear pharmacokinetics and metabolic fate of (+/-)-(1'R\*,3R\*)-3-phenyl-1-[(1',2',3',4'-tetrahydro-5',6'-methylene-dioxy-1'-naphthalenyl)methyl] pyrrolidine methanesulfonate (ABT-200) in dogs. *Drug Metab Dispos.* 2002 Oct;30(10):1094-101.

**Inhibitor · Natural Compounds · Compound Libraries · Recombinant Proteins**

This product is for Research Use Only · Not for Human or Veterinary or Therapeutic Use

Tel: 781-999-4286

E\_mail: info@targetmol.com

Address: 34 Washington Street, Wellesley Hills, MA 02481