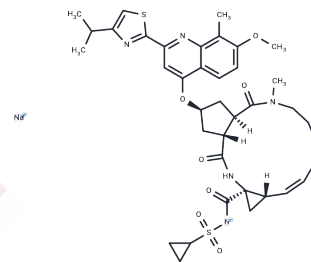


Simeprevir sodium

Chemical Properties

CAS No. :	1241946-89-3
Formula:	C ₃₈ H ₄₆ N ₅ NaO ₇ S ₂
Molecular Weight:	771.92
Storage:	Powder: -20°C for 3 years In solvent: -80°C for 1 year Actual storage temperature shall be subject to the COA.



Biological Description

Description	Simeprevir is a drug for the treatment and cure of hepatitis C.
Targets(IC50)	Others,HCV Protease,DNA/RNA Synthesis,SARS-CoV

Solubility Information

Solubility	DMSO: Soluble, (< 1 mg/ml refers to the product slightly soluble or insoluble)
------------	---

Preparing Stock Solutions

	1mg	5mg	10mg
1 mM	1.2955 mL	6.4774 mL	12.9547 mL
5 mM	0.2591 mL	1.2955 mL	2.5909 mL
10 mM	0.1295 mL	0.6477 mL	1.2955 mL
50 mM	0.0259 mL	0.1295 mL	0.2591 mL

Please select the appropriate solvent to prepare the stock solution, according to the solubility of the product in different solvents. Please use it as soon as possible.

Note: The dilution table applies only to solid products. For liquid products, please calculate the stock solution based on the stated concentration and/or density.

Reference

Kanda T, Nakamoto S, Wu S, Yokosuka O. New treatments for genotype 1 chronic hepatitis C - focus on simeprevir. *Ther Clin Risk Manag.* 2014 May 24;10:387-94. doi: 10.2147/TCRM.S50170. eCollection 2014. Review. PubMed PMID: 24920913; PubMed Central PMCID: PMC4043814.

Gaetano JN. Benefit-risk assessment of new and emerging treatments for hepatitis C: focus on simeprevir and sofosbuvir. *Drug Healthc Patient Saf.* 2014 Mar 31;6:37-45. doi: 10.2147/DHPS.S43304. eCollection 2014. Review. PubMed PMID: 24729731; PubMed Central PMCID: PMC3976205.

You DM, Pockros PJ. Simeprevir for the treatment of chronic hepatitis C. *Expert Opin Pharmacother.* 2013 Dec;14(18):2581-9. doi: 10.1517/14656566.2013.850074. Epub 2013 Oct 19. Review. PubMed PMID: 24138198.

Inhibitor · Natural Compounds · Compound Libraries · Recombinant Proteins

This product is for Research Use Only · Not for Human or Veterinary or Therapeutic Use

Tel:781-999-4286 E_mail:info@targetmol.com Address:34 Washington Street,Wellesley Hills,MA 02481