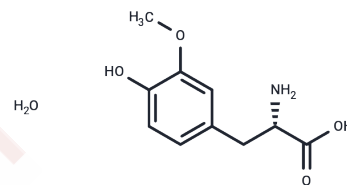


## 3-O-methyl-L-DOPA (hydrate)

## Chemical Properties

|                   |   |
|-------------------|---|
| CAS No. :         | 200630-46-2   |
| Formula:          | C <sub>10</sub> H <sub>15</sub> NO <sub>5</sub>   |
| Molecular Weight: | 229.23  |
| Storage:          | Powder: -20°C for 3 years   In solvent: -80°C for 1 year<br>Actual storage temperature shall be subject to the COA. |



## Biological Description

|               |  |
|---------------|--|
| Description   | 3-O-methyl-L-DOPA is a metabolite of L-DOPA, produced by the activity of catechol O-methyltransferase. 3-O-methyl-L-DOPA may have effects of its own or it may compete with the actions of L-DOPA. |
| Targets(IC50) | Others, Transferase  |

## Solubility Information

|            |  |
|------------|--|
| Solubility | DMSO: 1 mg/mL (4.36 mM), Sonication is recommended.<br>DMSO:PBS(pH 7.2) (1:3): 0.25 mg/mL (1.09 mM), Sonication is recommended.<br>(< 1 mg/ml refers to the product slightly soluble or insoluble) |
|------------|--|

## Preparing Stock Solutions

|       | 1mg       | 5mg        | 10mg       |
|-------|-----------|------------|------------|
| 1 mM  | 4.3624 mL | 21.8122 mL | 43.6243 mL |
| 5 mM  | 0.8725 mL | 4.3624 mL  | 8.7249 mL  |
| 10 mM | 0.4362 mL | 2.1812 mL  | 4.3624 mL  |
| 50 mM | 0.0872 mL | 0.4362 mL  | 0.8725 mL  |

Please select the appropriate solvent to prepare the stock solution, according to the solubility of the product in different solvents. Please use it as soon as possible.

Note: The dilution table applies only to solid products. For liquid products, please calculate the stock solution based on the stated concentration and/or density.

Inhibitor · Natural Compounds · Compound Libraries · Recombinant Proteins

This product is for Research Use Only · Not for Human or Veterinary or Therapeutic Use

Tel: 781-999-4286 E\_mail: info@targetmol.com Address: 34 Washington Street, Wellesley Hills, MA 02481