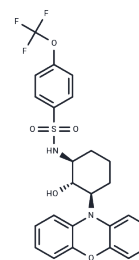


(1S,2S,3R)-DT-061

Chemical Properties

CAS No. : 1809427-20-0
 Formula: C₂₅H₂₃F₃N₂O₅S
 Molecular Weight: 520.52
 Storage: Powder: -20°C for 3 years | In solvent: -80°C for 1 year
Actual storage temperature shall be subject to the COA.



Biological Description

Description	(1S,2S,3R)-DT-061, an enantiomer of DT-061, is an orally bioavailable activator of PP2A.
Targets(IC50)	Others,Phosphatase

Solubility Information

Solubility	DMSO: 125 mg/mL (240.14 mM),Sonication is recommended. MEthanol: 25 mg/mL (48.03 mM),Sonication is recommended. (< 1 mg/ml refers to the product slightly soluble or insoluble)
In vivo Formulation	10% DMSO+40% PEG300+5% Tween-80+45% Saline: 3.3 mg/mL (6.34 mM),Sonication is recommended. <i>Please add the solvents sequentially, clarifying the solution as much as possible before adding the next one. Dissolve by heating and/or sonication if necessary. Working solution is recommended to be prepared and used immediately. The formulation provided above is for reference purposes only. In vivo formulations may vary and should be modified based on specific experimental conditions.</i>

Preparing Stock Solutions

	1mg	5mg	10mg
1 mM	1.9212 mL	9.6058 mL	19.2116 mL
5 mM	0.3842 mL	1.9212 mL	3.8423 mL
10 mM	0.1921 mL	0.9606 mL	1.9212 mL
50 mM	0.0384 mL	0.1921 mL	0.3842 mL

Please select the appropriate solvent to prepare the stock solution, according to the solubility of the product in different solvents. Please use it as soon as possible.

Note: The dilution table applies only to solid products. For liquid products, please calculate the stock solution based on the stated concentration and/or density.

Reference

Kauko O, et al. PP2A inhibition is a druggable MEK inhibitor resistance mechanism in KRAS-mutant lung cancer cells. Sci Transl Med. 2018 Jul 18;10(450). pii: eaaq1093.

Inhibitor · Natural Compounds · Compound Libraries · Recombinant Proteins

This product is for Research Use Only · Not for Human or Veterinary or Therapeutic Use

Tel:781-999-4286 E_mail:info@targetmol.com Address:34 Washington Street,Wellesley Hills,MA 02481