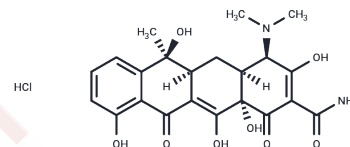


## 4-Epitetracycline hydrochloride

## Chemical Properties

CAS No. :	23313-80-6
Formula:	C <sub>22</sub> H <sub>25</sub> ClN <sub>2</sub> O <sub>8</sub>
Molecular Weight:	480.90
Storage:	Powder: -20°C for 3 years   In solvent: -80°C for 1 year Actual storage temperature shall be subject to the COA.



## Biological Description

Description	Epitetracycline is an epimer of the antibiotic tetracycline . Epimers of tetracycline form without catalysis and are considered degradation products. Epitetracycline has decreased activity as an antibiotic or a Tet repressor effector but may have stronger toxic effects in animals.
Targets(IC50)	Others,Antibiotic

## Solubility Information

Solubility	DMSO: 1 mg/mL (2.08 mM),Sonication is recommended. PBS (pH 7.2): 3.3 mg/mL (6.86 mM),Sonication is recommended. DMF: 1.4 mg/mL (2.91 mM),Sonication is recommended. (< 1 mg/ml refers to the product slightly soluble or insoluble)
------------	--

## Preparing Stock Solutions

	1mg	5mg	10mg
1 mM	2.0794 mL	10.3972 mL	20.7943 mL
5 mM	0.4159 mL	2.0794 mL	4.1589 mL
10 mM	0.2079 mL	1.0397 mL	2.0794 mL
50 mM	0.0416 mL	0.2079 mL	0.4159 mL

Please select the appropriate solvent to prepare the stock solution, according to the solubility of the product in different solvents. Please use it as soon as possible.

Note: The dilution table applies only to solid products. For liquid products, please calculate the stock solution based on the stated concentration and/or density.

**Inhibitor · Natural Compounds · Compound Libraries · Recombinant Proteins**

This product is for Research Use Only· Not for Human or Veterinary or Therapeutic Use

Tel:781-999-4286 E\_mail:info@targetmol.com Address:34 Washington Street,Wellesley Hills,MA 02481