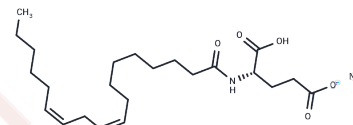


Sodium linoleoyl glutamate

Chemical Properties

CAS No. :	494825-02-4
Formula:	C ₂₃ H ₃₈ NNaO ₅
Molecular Weight:	431.54
Storage:	Powder: -20°C for 3 years In solvent: -80°C for 1 year Actual storage temperature shall be subject to the COA.



Biological Description

Description	Sodium linoleoyl glutamate is salt obtained from linoleoyl glutamate.
Targets(IC50)	Others

Preparing Stock Solutions

	1mg	5mg	10mg
1 mM	2.3173 mL	11.5864 mL	23.1728 mL
5 mM	0.4635 mL	2.3173 mL	4.6346 mL
10 mM	0.2317 mL	1.1586 mL	2.3173 mL
50 mM	0.0463 mL	0.2317 mL	0.4635 mL

Please select the appropriate solvent to prepare the stock solution, according to the solubility of the product in different solvents. Please use it as soon as possible.

Note: The dilution table applies only to solid products. For liquid products, please calculate the stock solution based on the stated concentration and/or density.

Reference

- Yoshinaga N, Alborn HT, Nakanishi T, Suckling DM, Nishida R, Tumlinson JH, Mori N. Fatty acid-amino acid conjugates diversification in lepidopteran caterpillars. *J Chem Ecol.* 2010 Mar;36(3):319-25. doi: 10.1007/s10886-010-9764-8. Epub 2010 Feb 27. PubMed PMID: 20195891.
- Yoshinaga N, Aboshi T, Ishikawa C, Fukui M, Shimoda M, Nishida R, Lait CG, Tumlinson JH, Mori N. Fatty acid amides, previously identified in caterpillars, found in the cricket *Teleogryllus taiwanemma* and fruit fly *Drosophila melanogaster* larvae. *J Chem Ecol.* 2007 Jul;33(7):1376-81. PubMed PMID: 17566833.
- Gomez SK, Cox MM, Bede JC, Inoue K, Alborn HT, Tumlinson JH, Korth KL. Lepidopteran herbivory and oral factors induce transcripts encoding novel terpene synthases in *Medicago truncatula*. *Arch Insect Biochem Physiol.* 2005 Feb;58(2):114-27. PubMed PMID: 15660362.
- Ishizuka K, Kanayama A, Satsu H, Miyamoto Y, Furihata K, Shimizu M. Identification of a taurine transport inhibitory substance in sesame seeds. *Biosci Biotechnol Biochem.* 2000 Jun;64(6):1166-72. PubMed PMID: 10923786.

Inhibitor · Natural Compounds · Compound Libraries · Recombinant Proteins

This product is for Research Use Only · Not for Human or Veterinary or Therapeutic Use

Tel:781-999-4286 E_mail:info@targetmol.com Address:34 Washington Street,Wellesley Hills,MA 02481