

Phosphatidylserines sodium salt

Chemical Properties

CAS No. : 383908-63-2

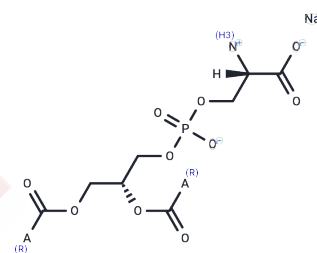
Formula: N/A

Molecular Weight:

Store at low temperature

Storage: Powder: -20°C for 3 years | In solvent: -80°C for 1 year

Actual storage temperature shall be subject to the COA.



Biological Description

Description	Phosphatidylserines sodium salt (L- α -Phosphatidylserine sodium salt) is a compound extracted from natural soybean oil residues. It is an active substance present in cell membranes, which can improve nerve cell function and can be used to study nervous system diseases.
Targets(IC50)	Others

Solubility Information

Solubility	Chloroform: Soluble (< 1 mg/ml refers to the product slightly soluble or insoluble)
------------	---

Reference

Vance, J.E. Phosphatidylserine and phosphatidylethanolamine in mammalian cells: Two metabolically related aminophospholipids J. Lipid Res. 49(7), 1377-1387 (2008).

Darabi M, et al. Phosphatidylserine in atherosclerosis. Curr Opin Lipidol. 2016 Aug;27(4):414-20.

Segawa K, et al. An Apoptotic 'Eat Me' Signal: Phosphatidylserine Exposure. Trends Cell Biol. 2015 Nov;25(11):639-650.

Inhibitor · Natural Compounds · Compound Libraries · Recombinant Proteins

This product is for Research Use Only · Not for Human or Veterinary or Therapeutic Use

Tel:781-999-4286 E_mail:info@targetmol.com Address:34 Washington Street,Wellesley Hills,MA 02481