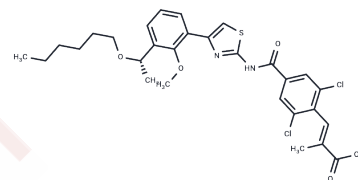


Lusutrombopag

Chemical Properties

| | |
|-------------------|---|
| CAS No. : | 1110766-97-6 |
| Formula: | C ₂₉ H ₃₂ Cl ₂ N ₂ O ₅ S |
| Molecular Weight: | 591.55 |
| Storage: | Powder: -20°C for 3 years In solvent: -80°C for 1 year Actual storage temperature shall be subject to the COA. |



Biological Description

| | |
|---------------|---|
| Description | Lusutrombopag (Mulpleta) is an orally bioavailable, small molecule thrombopoietin (TPO) receptor agonist for chronic liver disease (CLD) patients with thrombocytopenia prior to elective invasive surgery. |
| Targets(IC50) | Thrombin,Thrombopoietin Receptor |
| In vitro | Lusutrombopag is an agonist of the thrombopoietin receptor that activates platelet production. Lusutrombopag acts selectively on the human TPO receptor and activates signal transduction pathways that promote the proliferation and differentiation of bone marrow cells into megakaryocytes, thereby increasing platelet levels. |

Solubility Information

| | |
|---------------------|--|
| Solubility | DMSO: 250 mg/mL (422.62 mM),Sonication is recommended. (< 1 mg/ml refers to the product slightly soluble or insoluble) |
| In vivo Formulation | 10% DMSO+40% PEG300+5% Tween 80+45% Saline: 2 mg/mL (3.38 mM),Sonication is recommended. <i>Please add the solvents sequentially, clarifying the solution as much as possible before adding the next one. Dissolve by heating and/or sonication if necessary. Working solution is recommended to be prepared and used immediately. The formulation provided above is for reference purposes only. In vivo formulations may vary and should be modified based on specific experimental conditions.</i> |

Preparing Stock Solutions

| | 1mg | 5mg | 10mg |
|-------|------------|------------|-------------|
| 1 mM | 1.6905 mL | 8.4524 mL | 16.9047 mL |
| 5 mM | 0.3381 mL | 1.6905 mL | 3.3809 mL |
| 10 mM | 0.169 mL | 0.8452 mL | 1.6905 mL |
| 50 mM | 0.0338 mL | 0.169 mL | 0.3381 mL |

Please select the appropriate solvent to prepare the stock solution, according to the solubility of the product in different solvents. Please use it as soon as possible.

Note: The dilution table applies only to solid products. For liquid products, please calculate the stock solution based on the stated concentration and/or density.

Reference

Kim ES, et al. Lusutrombopag: First Global Approval. *Drugs*. 2016 Jan;76(1):155-8.

Inhibitor · Natural Compounds · Compound Libraries · Recombinant Proteins

This product is for Research Use Only · Not for Human or Veterinary or Therapeutic Use

Tel:781-999-4286 E_mail:info@targetmol.com Address:34 Washington Street,Wellesley Hills,MA 02481