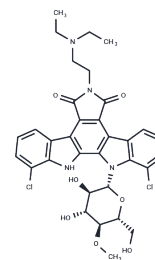


## Becatecarin

## Chemical Properties

CAS No. :	119673-08-4
Formula:	C <sub>33</sub> H <sub>34</sub> Cl <sub>2</sub> N <sub>4</sub> O <sub>7</sub>
Molecular Weight:	669.56
Storage:	Powder: -20°C for 3 years   In solvent: -80°C for 1 year Actual storage temperature shall be subject to the COA.



## Biological Description

Description	Becatecarin is a water-soluble, diethylaminoethyl analog of the antineoplastic antibiotic rebeccamycin. It intercalates into DNA, stabilizing the DNA-topoisomerase complex. This results in the potent catalytic inhibition of both topoisomerases I and II, initiating DNA cleavage and apoptosis. Becatecarin, alone or in combination with other compounds, has anti-cancer as well as myelosuppressive effects in vivo. It is also a transport substrate of the ATP-binding cassette (ABC) transporter ABCG2.
Targets(IC50)	Others,Topoisomerase

## Solubility Information

Solubility	H <sub>2</sub> O: Soluble DMSO: Soluble (< 1 mg/ml refers to the product slightly soluble or insoluble)
------------	---

## Preparing Stock Solutions

	1mg	5mg	10mg
1 mM	1.4935 mL	7.4676 mL	14.9352 mL
5 mM	0.2987 mL	1.4935 mL	2.987 mL
10 mM	0.1494 mL	0.7468 mL	1.4935 mL
50 mM	0.0299 mL	0.1494 mL	0.2987 mL

Please select the appropriate solvent to prepare the stock solution, according to the solubility of the product in different solvents. Please use it as soon as possible.

Note: The dilution table applies only to solid products. For liquid products, please calculate the stock solution based on the stated concentration and/or density.

**Inhibitor · Natural Compounds · Compound Libraries · Recombinant Proteins**

This product is for Research Use Only · Not for Human or Veterinary or Therapeutic Use

Tel:781-999-4286 E\_mail:info@targetmol.com Address:34 Washington Street,Wellesley Hills,MA 02481