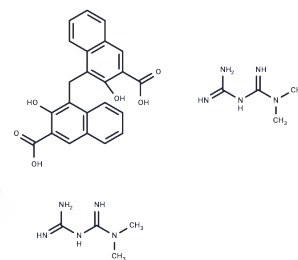


## Metformin embonate

## Chemical Properties

CAS No. :	34461-22-8
Formula:	C <sub>31</sub> H <sub>38</sub> N <sub>10</sub> O <sub>6</sub>
Molecular Weight:	646.7
Storage:	Powder: -20°C for 3 years   In solvent: -80°C for 1 year Actual storage temperature shall be subject to the COA.



## Biological Description

Description	Metformin embonate is an AMP-activated protein kinase (AMPK) activator that improves glycemic control by improving insulin sensitivity and decreasing intestinal absorption of glucose.
Targets(IC50)	Others

## Preparing Stock Solutions

	1mg	5mg	10mg
1 mM	1.5463 mL	7.7316 mL	15.4631 mL
5 mM	0.3093 mL	1.5463 mL	3.0926 mL
10 mM	0.1546 mL	0.7732 mL	1.5463 mL
50 mM	0.0309 mL	0.1546 mL	0.3093 mL

Please select the appropriate solvent to prepare the stock solution, according to the solubility of the product in different solvents. Please use it as soon as possible.

Note: The dilution table applies only to solid products. For liquid products, please calculate the stock solution based on the stated concentration and/or density.

Inhibitor · Natural Compounds · Compound Libraries · Recombinant Proteins

This product is for Research Use Only · Not for Human or Veterinary or Therapeutic Use

Tel:781-999-4286 E\_mail:info@targetmol.com Address:34 Washington Street,Wellesley Hills,MA 02481