

HAMI 3379

Chemical Properties

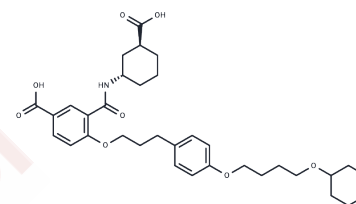
CAS No. : 1245653-57-9

Formula: C34H45NO8

Molecular Weight: 595.72

Storage: Store at low temperature, Keep away from moisture
Powder: -20°C for 3 years | In solvent: -80°C for 1 year

Actual storage temperature shall be subject to the COA.



Biological Description

Description	HAMI 3379 (HAMI3379) is a selective cysteinyl leukotriene receptor 2 (CysLT2) antagonist that dose- and time-dependently attenuates brain damage and inhibits microglial cell inflammation following focal cerebral ischemia in rats and attenuates ischemia-like neuronal damage by inhibiting microglial activation.
Targets(IC50)	LTR, Leukotriene Receptor
In vitro	HAMI 3379 effectively antagonizes LTD4- and LTC4-induced intracellular calcium mobilization in a CysLT2 receptor reporter cell line, with IC50 values of 3.8 nM and 4.4 nM, respectively. In contrast, HAMI 3379 shows minimal potency (IC50 > 10000 nM) in a recombinant CysLT1 receptor cell line and displays no agonistic activity in either CysLT receptor cell line.[1]
In vivo	0.025-0.4 mg/kg HAMI 3379, intraperitoneally, was able to significantly reduce infarct volume and decrease the percent increase in the ischemic hemisphere to contralateral hemisphere ratio over the dose range of 0.1-0.4 mg/kg. Administration of 0.1 mg/kg HAMI 3379, intraperitoneal, at 0 and 1 hour after reperfusion was effective in reducing infarct volume, alleviating cerebral edema, decreasing neurologic function scores, and enhancing grip angle. [2]

Solubility Information

Solubility	DMSO: 80 mg/mL (134.29 mM), Sonication is recommended. (< 1 mg/ml refers to the product slightly soluble or insoluble)
------------	---------------------------------------------------------------------------------------------------------------------------

Preparing Stock Solutions

	1mg	5mg	10mg
1 mM	1.6786 mL	8.3932 mL	16.7864 mL
5 mM	0.3357 mL	1.6786 mL	3.3573 mL
10 mM	0.1679 mL	0.8393 mL	1.6786 mL
50 mM	0.0336 mL	0.1679 mL	0.3357 mL

Please select the appropriate solvent to prepare the stock solution, according to the solubility of the product in different solvents. Please use it as soon as possible.

Note: The dilution table applies only to solid products. For liquid products, please calculate the stock solution based on the stated concentration and/or density.

Reference

Wunder F, et al. Pharmacological characterization of the first potent and selective antagonist at the cysteinyl leukotriene 2 (CysLT₂) receptor. *Br J Pharmacol.* 2010 May;160(2):399-409.

Shi QJ, et al. HAMI 3379, a CysLT₂R antagonist, dose- and time-dependently attenuates brain injury and inhibits microglial inflammation after focal cerebral ischemia in rats. *Neuroscience.* 2015 Apr 16;291:53-69.

Inhibitor · Natural Compounds · Compound Libraries · Recombinant Proteins

This product is for Research Use Only · Not for Human or Veterinary or Therapeutic Use

Tel:781-999-4286 E_mail:info@targetmol.com Address:34 Washington Street,Wellesley Hills,MA 02481