

MEN 10207

Chemical Properties

CAS No. : 126050-12-2

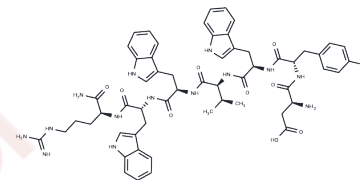
Formula: C57H68N14O10

Molecular Weight: 1109.25

Keep away from moisture

Storage: Powder: -20°C for 3 years | In solvent: -80°C for 1 year

Actual storage temperature shall be subject to the COA.



Biological Description

Description	MEN 10207 is an antagonist of tachykinin.
Targets(IC50)	Neurokinin receptor

Preparing Stock Solutions

	1mg	5mg	10mg
1 mM	0.9015 mL	4.5076 mL	9.0151 mL
5 mM	0.1803 mL	0.9015 mL	1.803 mL
10 mM	0.0902 mL	0.4508 mL	0.9015 mL
50 mM	0.018 mL	0.0902 mL	0.1803 mL

Please select the appropriate solvent to prepare the stock solution, according to the solubility of the product in different solvents. Please use it as soon as possible.

Note: The dilution table applies only to solid products. For liquid products, please calculate the stock solution based on the stated concentration and/or density.

Reference

Mussap CJ, Stamatakos C, Burcher E. Radioligand binding, autoradiographic and functional studies demonstrate tachykinin NK-2 receptors in dog urinary bladder. *J Pharmacol Exp Ther.* 1996 Oct;279(1):423-34. PubMed PMID: 8859022.

Burcher E, Zeng XP, Strigas J, Geraghty DP, Lavielle S. Tachykinin receptors in guinea-pig airways: characterization using selective ligands. *Can J Physiol Pharmacol.* 1995 Jul;73(7):915-22. PubMed PMID: 8846430.

Medeiros MD, Turner AJ. Metabolic stability of some tachykinin analogues to cell-surface peptidases: roles for endopeptidase-24.11 and aminopeptidase N. *Peptides.* 1995;16(3):441-7. PubMed PMID: 7651897.

Parrish MB, Rainsford KD, Johnson DM, Daniel EE. NK1 receptors mediated release of 6-keto-PGF1 alpha from the ex vivo perfused canine ileum. *J Pharmacol Exp Ther.* 1994 Oct;271(1):39-47. PubMed PMID: 7525925.

Inhibitor · Natural Compounds · Compound Libraries · Recombinant Proteins

This product is for Research Use Only · Not for Human or Veterinary or Therapeutic Use

Tel:781-999-4286 E_mail:info@targetmol.com Address:34 Washington Street,Wellesley Hills,MA 02481