

6''-O-Acetylglycitin

Chemical Properties

CAS No. : 134859-96-4

Formula: C₂₄H₂₄O₁₁

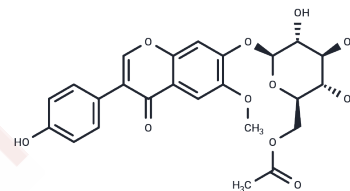
Molecular Weight: 488.44

Storage:

Keep away from direct sunlight, Keep away from moisture

Powder: -20°C for 3 years | In solvent: -80°C for 1 year

Actual storage temperature shall be subject to the COA.



Biological Description

Description	6''-O-Acetylglycitin (Glycitin 6''-O-Acetate) is a compound that can be extracted from black soybeans and serves as an LDH inhibitor.
Targets(IC50)	Dehydrogenase
In vitro	A simple and efficient method based on ultrafiltration liquid chromatography??mass spectrometry was applied to rapidly screen and identify ligands for lactate dehydrogenase (LDH) from the extracts of black soybeans (<i>Glycine max</i> L. Merrill), and the compounds were further assessed for ant-stroke activity using a PC12 cell model. Six major isoflavones including daidzin, glycitin, genistin, 6'-O-acetyldaidzin, 6''-O-Acetylglycitin and malonyl genistin were identified as potent LDH inhibitors. A continuous online method consisted of a microwave-assisted extraction, online solvent concentration tank and countercurrent chromatography (MAE-SCT-CCC) was newly developed for scaled up production of these compounds with high purity and efficiency.

Solubility Information

Solubility	DMSO: 80 mg/mL (163.79 mM), Sonication is recommended. (< 1 mg/ml refers to the product slightly soluble or insoluble)
In vivo Formulation	10% DMSO+40% PEG300+5% Tween 80+45% Saline: 3.3 mg/mL (6.76 mM), Sonication is recommended. <i>Please add the solvents sequentially, clarifying the solution as much as possible before adding the next one. Dissolve by heating and/or sonication if necessary. Working solution is recommended to be prepared and used immediately. The formulation provided above is for reference purposes only. In vivo formulations may vary and should be modified based on specific experimental conditions.</i>

Preparing Stock Solutions

	1mg	5mg	10mg
1 mM	2.0473 mL	10.2367 mL	20.4733 mL
5 mM	0.4095 mL	2.0473 mL	4.0947 mL
10 mM	0.2047 mL	1.0237 mL	2.0473 mL
50 mM	0.0409 mL	0.2047 mL	0.4095 mL

Please select the appropriate solvent to prepare the stock solution, according to the solubility of the product in different solvents. Please use it as soon as possible.

Note: The dilution table applies only to solid products. For liquid products, please calculate the stock solution based on the stated concentration and/or density.

Reference

Huang RY, Chou CC. Stability of isoflavone isomers in steamed black soybeans and black soybean koji stored under different conditions. J Agric Food Chem. 2009 Mar 11;57(5):1927-32.

Inhibitor · Natural Compounds · Compound Libraries · Recombinant Proteins

This product is for Research Use Only · Not for Human or Veterinary or Therapeutic Use

Tel:781-999-4286 E_mail:info@targetmol.com Address:34 Washington Street,Wellesley Hills,MA 02481