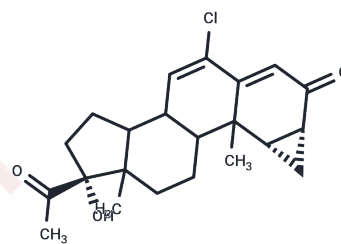


Cyproterone

Chemical Properties

CAS No. :	2098-66-0
Formula:	C ₂₂ H ₂₇ ClO ₃
Molecular Weight:	374.9
Storage:	Powder: -20°C for 3 years In solvent: -80°C for 1 year Actual storage temperature shall be subject to the COA.



Biological Description

Description	Cyproterone, an anti-androgen, is used in combination with estrogen for the therapy of hirsutism and severe acne in females and as a palliative in prostatic carcinoma.
Targets(IC50)	Estrogen Receptor/ERR,Others

Solubility Information

Solubility	DMSO: Soluble, (< 1 mg/ml refers to the product slightly soluble or insoluble)
------------	---

Preparing Stock Solutions

	1mg	5mg	10mg
1 mM	2.6674 mL	13.3369 mL	26.6738 mL
5 mM	0.5335 mL	2.6674 mL	5.3348 mL
10 mM	0.2667 mL	1.3337 mL	2.6674 mL
50 mM	0.0533 mL	0.2667 mL	0.5335 mL

Please select the appropriate solvent to prepare the stock solution, according to the solubility of the product in different solvents. Please use it as soon as possible.

Note: The dilution table applies only to solid products. For liquid products, please calculate the stock solution based on the stated concentration and/or density.

Reference

Gruber DM, Sator MO, Joura EA, Kokoschka EM, Heinze G, Huber JC. Topical cyproterone acetate treatment in women with acne: a placebo-controlled trial. Arch Dermatol. 1998 Apr;134(4):459-63. PubMed PMID: 9554298.

Barradell LB, Faulds D. Cyproterone. A review of its pharmacology and therapeutic efficacy in prostate cancer. Drugs Aging. 1994 Jul;5(1):59-80. Review. PubMed PMID: 7919640.

Neumann F. The antiandrogen cyproterone acetate: discovery, chemistry, basic pharmacology, clinical use and tool in basic research. Exp Clin Endocrinol. 1994;102(1):1-32. Review. PubMed PMID: 8005205.

Goldenberg SL, Bruchofsky N. Use of cyproterone acetate in prostate cancer. Urol Clin North Am. 1991 Feb;18(1):111-22. Review. PubMed PMID: 1825143.

Inhibitor · Natural Compounds · Compound Libraries · Recombinant Proteins

This product is for Research Use Only · Not for Human or Veterinary or Therapeutic Use

Tel:781-999-4286 E_mail:info@targetmol.com Address:34 Washington Street,Wellesley Hills,MA 02481