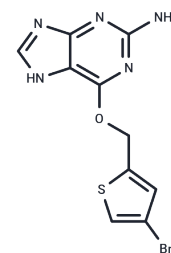


## Lomeguatrib

## Chemical Properties

CAS No. :	192441-08-0
Formula:	C10H8BrN5OS
Molecular Weight:	326.17
Storage:	Keep away from direct sunlight, Store under nitrogen Powder: -20°C for 3 years   In solvent: -80°C for 1 year <i>Actual storage temperature shall be subject to the COA.</i>



## Biological Description

Description	Lomeguatrib (PaTrin-2), a modified guanine base, inhibits the activity of DNA repair protein O(6)-alkylguanine-DNA alkyltransferase (MGMT) .
Targets(IC50)	DNA Alkylation, DNA Methyltransferase
In vitro	In the A375M human melanoma xenograft model, intraperitoneal injection of Lomeguatrib (20 mg/kg) treatment was found to inhibit ATase activity.
In vivo	In Raji cells, Lomeguatrib inhibits ATase activity with an IC50 value of 10 nM, while in MCF-7 cells, it effectively inhibits MGMT with an IC50 of 6 nM.

## Solubility Information

Solubility	H2O: < 1 mg/mL (insoluble or slightly soluble), Ethanol: < 1 mg/mL (insoluble or slightly soluble), DMSO: 55 mg/mL (168.62 mM), Sonication is recommended. (< 1 mg/ml refers to the product slightly soluble or insoluble)
In vivo Formulation	10% DMSO+40% PEG300+5% Tween 80+45% Saline: 2 mg/mL (6.13 mM), Sonication is recommended. <i>Please add the solvents sequentially, clarifying the solution as much as possible before adding the next one. Dissolve by heating and/or sonication if necessary. Working solution is recommended to be prepared and used immediately. The formulation provided above is for reference purposes only. In vivo formulations may vary and should be modified based on specific experimental conditions.</i>

### Preparing Stock Solutions

---

	<b>1mg</b>	<b>5mg</b>	<b>10mg</b>
1 mM	3.0659 mL	15.3294 mL	30.6589 mL
5 mM	0.6132 mL	3.0659 mL	6.1318 mL
10 mM	0.3066 mL	1.5329 mL	3.0659 mL
50 mM	0.0613 mL	0.3066 mL	0.6132 mL

---

Please select the appropriate solvent to prepare the stock solution, according to the solubility of the product in different solvents. Please use it as soon as possible.

Note: The dilution table applies only to solid products. For liquid products, please calculate the stock solution based on the stated concentration and/or density.

### Reference

McElhinney RS, et al. J Med Chem, 1998, 41(26), 5265-5271.

Clemons M, et al. Br J Cancer, 2005, 93(10), 1152-1156.

Middleton MR, et al. Int J Cancer, 2000, 85(2), 248-252.

**Inhibitor · Natural Compounds · Compound Libraries · Recombinant Proteins**

This product is for Research Use Only · Not for Human or Veterinary or Therapeutic Use

Tel:781-999-4286 E\_mail:info@targetmol.com Address:34 Washington Street,Wellesley Hills,MA 02481