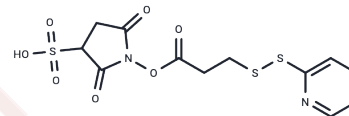


SPDP-sulfo

Chemical Properties

CAS No. :	121115-30-8
Formula:	C ₁₂ H ₁₂ N ₂ O ₇ S ₃
Molecular Weight:	392.42
Storage:	Powder: -20°C for 3 years In solvent: -80°C for 1 year Actual storage temperature shall be subject to the COA.



Biological Description

Description	SPDP-sulfo is a cleavable linker vital in ADC synthesis. SPDP-sulfo joins cytotoxic drugs to antibodies, enabling precise delivery to cells or proteins. The cleavable nature ensures controlled drug release, optimizing ADC effectiveness.
Targets(IC50)	ADC Linker
In vitro	ADCs consist of an antibody conjugated to an ADC cytotoxin via an ADC linker[1].

Preparing Stock Solutions

	1mg	5mg	10mg
1 mM	2.5483 mL	12.7415 mL	25.4829 mL
5 mM	0.5097 mL	2.5483 mL	5.0966 mL
10 mM	0.2548 mL	1.2741 mL	2.5483 mL
50 mM	0.051 mL	0.2548 mL	0.5097 mL

Please select the appropriate solvent to prepare the stock solution, according to the solubility of the product in different solvents. Please use it as soon as possible.

Note: The dilution table applies only to solid products. For liquid products, please calculate the stock solution based on the stated concentration and/or density.

Reference

Beck A, et al. Strategies and challenges for the next generation of antibody-drug conjugates. Nat Rev Drug Discov. 2017 May;16(5):315-337.

Inhibitor · Natural Compounds · Compound Libraries · Recombinant Proteins

This product is for Research Use Only · Not for Human or Veterinary or Therapeutic Use

Tel:781-999-4286 E_mail:info@targetmol.com Address:34 Washington Street,Wellesley Hills,MA 02481