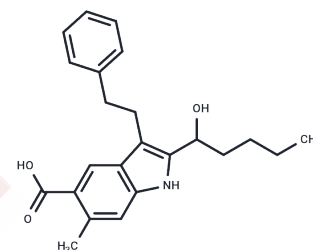


FJ9

Chemical Properties

CAS No. :	873841-43-1
Formula:	C ₂₃ H ₂₇ N ₃ O
Molecular Weight:	365.47
Storage:	Powder: -20°C for 3 years In solvent: -80°C for 1 year Actual storage temperature shall be subject to the COA.



Biological Description

Description	FJ9 is an effective Wnt/ β -catenin antagonist ($K_i = 29 \mu\text{M}$) that downregulates canonical Wnt signaling, inhibits HSC (hepatic stellate cell) activation, and reduces MeCP2 protein levels. FJ9 also disrupts the protein-protein interaction between Frz7 and the DVL PDZ domain, induces apoptosis in human cancer cell lines, and inhibits tumor growth in a mouse xenograft model.
Targets(IC50)	Wnt/beta-catenin

Preparing Stock Solutions

	1mg	5mg	10mg
1 mM	2.7362 mL	13.681 mL	27.362 mL
5 mM	0.5472 mL	2.7362 mL	5.4724 mL
10 mM	0.2736 mL	1.3681 mL	2.7362 mL
50 mM	0.0547 mL	0.2736 mL	0.5472 mL

Please select the appropriate solvent to prepare the stock solution, according to the solubility of the product in different solvents. Please use it as soon as possible.

Note: The dilution table applies only to solid products. For liquid products, please calculate the stock solution based on the stated concentration and/or density.

Reference

Soldi R, Horrigan SK, Cholody MW, Padia J, Sorna V, Bearss J, Gilcrease G, Bhalla K, Verma A, Vankayalapati H, Sharma S. Design, Synthesis, and Biological Evaluation of a Series of Anthracene-9,10-dione Dioxime β -Catenin Pathway Inhibitors. *J Med Chem*. 2015 Aug 13;58(15):5854-62.

Kweon SM, et al. Wnt Pathway Stabilizes MeCP2 Protein to Repress PPAR- γ in Activation of Hepatic Stellate Cells. *PLoS One*. 2016;11(5):e0156111.

Fujii N, et al. An antagonist of dishevelled protein-protein interaction suppresses beta-catenin-dependent tumor cell growth. *Cancer Res*. 2007;67(2):573-579.

Inhibitor · Natural Compounds · Compound Libraries · Recombinant Proteins

This product is for Research Use Only · Not for Human or Veterinary or Therapeutic Use

Tel:781-999-4286 E_mail:info@targetmol.com Address:34 Washington Street,Wellesley Hills,MA 02481