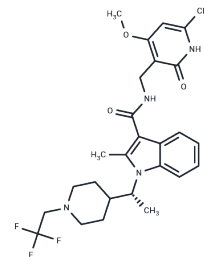


CPI-1205

Chemical Properties

CAS No. :	1621862-70-1
Formula:	C27H33F3N4O3
Molecular Weight:	518.57
Storage:	Store at low temperature Powder: -20°C for 3 years In solvent: -80°C for 1 year <i>Actual storage temperature shall be subject to the COA.</i>



Biological Description

Description	CPI-1205 is a highly potent and selective inhibitor of EZH2(IC ₅₀ : 0.002 μM, EC ₅₀ : 0.032 μM) .
Targets(IC ₅₀)	Histone Methyltransferase
In vivo	CPI-1205 is a highly potent (biochemical IC ₅₀ = 0.002 μM, cellular EC ₅₀ = 0.032 μM) and selective inhibitor of EZH2. This compound demonstrates robust antitumor effects in a Karpas-422 xenograft model when dosed at 160 mg/kg BID.

Solubility Information

Solubility	DMSO: 95 mg/mL (183.2 mM), Sonication is recommended. (< 1 mg/ml refers to the product slightly soluble or insoluble)
------------	---

Preparing Stock Solutions

	1mg	5mg	10mg
1 mM	1.9284 mL	9.6419 mL	19.2838 mL
5 mM	0.3857 mL	1.9284 mL	3.8568 mL
10 mM	0.1928 mL	0.9642 mL	1.9284 mL
50 mM	0.0386 mL	0.1928 mL	0.3857 mL

Please select the appropriate solvent to prepare the stock solution, according to the solubility of the product in different solvents. Please use it as soon as possible.

Note: The dilution table applies only to solid products. For liquid products, please calculate the stock solution based on the stated concentration and/or density.

Reference

Vaswani RG, et al. Identification of (R)-N-((4-Methoxy-6-methyl-2-oxo-1,2-dihydropyridin-3-yl)methyl)-2-methyl-1-(1-(1-(2,2,2-trifluoroethyl)piperidin-4-yl)ethyl)-1H-indole-3-carboxamide (CPI-1205), a Potent and Selective Inhibitor of Histone Methyltransferase EZH2, Suitable for Phase I Clinical Trials for B-Cell Lymphomas. *J Med Chem.* 2016 Nov 10;59(21):9928-9941.

Gulati N , Béguelin, Wendy, Giulino-Roth L . Enhancer of zeste homolog 2 (EZH2) inhibitors[J]. *Leukemia & Lymphoma*, 2018:1-12.

Inhibitor · Natural Compounds · Compound Libraries · Recombinant Proteins

This product is for Research Use Only· Not for Human or Veterinary or Therapeutic Use

Tel:781-999-4286 E_mail:info@targetmol.com Address:34 Washington Street,Wellesley Hills,MA 02481