

GW-803430

## Chemical Properties

CAS No. : 515141-51-2

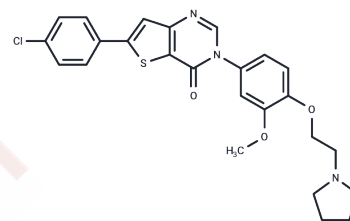
Formula: C<sub>25</sub>H<sub>24</sub>ClN<sub>3</sub>O<sub>3</sub>S

Molecular Weight: 481.99

Keep away from moisture

Storage: Powder: -20°C for 3 years | In solvent: -80°C for 1 year

Actual storage temperature shall be subject to the COA.



## Biological Description

Description	GW-803430 (GW-3430) is an orally active and selective melanin-concentrating hormone receptor 1 (MCH R1) antagonist used in the study of obesity.
Targets(IC50)	Melanin-concentrating Hormone Receptor (MCHR),GPCR
In vitro	GW-803430 exhibits significant antagonistic activity against the action of MCH on the MCHR1 receptor with an IC50 value of approximately 13 nM. [2]
In vivo	GW-803430 administered orally once daily at doses of 0.3, 3, and 15 mg/kg induced significant and sustained dose-dependent body weight loss compared to controls. GW-803430 has a favorable pharmacokinetic profile with a bioavailability of 31%, a half-life of 11 hours, and has been shown to exhibit excellent brain penetration in mice with a brain to plasma concentration ratio of 6:1, and is therefore considered an ideal compound. [1]

## Solubility Information

Solubility	DMSO: <1 mg/mL (insoluble) (< 1 mg/ml refers to the product slightly soluble or insoluble)
------------	---

### Preparing Stock Solutions

---

	1mg	5mg	10mg
1 mM	2.0747 mL	10.3737 mL	20.7473 mL
5 mM	0.4149 mL	2.0747 mL	4.1495 mL
10 mM	0.2075 mL	1.0374 mL	2.0747 mL
50 mM	0.0415 mL	0.2075 mL	0.4149 mL

---

Please select the appropriate solvent to prepare the stock solution, according to the solubility of the product in different solvents. Please use it as soon as possible.

Note: The dilution table applies only to solid products. For liquid products, please calculate the stock solution based on the stated concentration and/or density.

### Reference

Hertzog DL, et al. The discovery and optimization of pyrimidinone-containing MCH R1 antagonists. *Bioorg Med Chem Lett.* 2006 Sep 15;16(18):4723-7.

Velusami CC, et al. Effect of *Nelumbo nucifera* Petal Extracts on Lipase, Adipogenesis, Adipolysis, and Central Receptors of Obesity. *Evid Based Complement Alternat Med.* 2013;2013:145925.

**Inhibitor · Natural Compounds · Compound Libraries · Recombinant Proteins**

This product is for Research Use Only · Not for Human or Veterinary or Therapeutic Use

Tel:781-999-4286 E\_mail:info@targetmol.com Address:34 Washington Street,Wellesley Hills,MA 02481