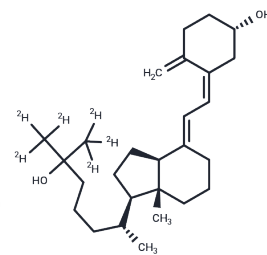


Calcifediol-D6

Chemical Properties

| | |
|-------------------|---|
| CAS No. : | 78782-98-6 |
| Formula: | C ₂₇ H ₄₄ O ₂ |
| Molecular Weight: | 406.67 |
| Storage: | Powder: -20°C for 3 years In solvent: -80°C for 1 year Actual storage temperature shall be subject to the COA. |



Biological Description

| | |
|---------------|--|
| Description | Calcifediol-D6 is the deuterated form of Calcifediol (TMSM-3156), which is a prehormone that is produced in the liver by hydroxylation of vitamin D3 by the enzyme cholecalciferol 25-hydroxylase. |
| Targets(IC50) | Vitamin |
| In vivo | Calcifediol is converted in the kidneys (by the enzyme 25(OH)D-1 α -hydroxylase) into calcitriol (1,25-(OH) ₂ D ₃), a secosteroid hormone that is the active form of vitamin D. It can also be converted into 24-hydroxycalcidiol in the kidneys via 24-hydroxylation. |

Preparing Stock Solutions

| | 1mg | 5mg | 10mg |
|-------|-----------|-----------|-----------|
| 1 mM | 2.459 mL | 12.295 mL | 24.590 mL |
| 5 mM | 0.4918 mL | 2.459 mL | 4.918 mL |
| 10 mM | 0.2459 mL | 1.2295 mL | 2.459 mL |
| 50 mM | 0.0492 mL | 0.2459 mL | 0.4918 mL |

Please select the appropriate solvent to prepare the stock solution, according to the solubility of the product in different solvents. Please use it as soon as possible.

Note: The dilution table applies only to solid products. For liquid products, please calculate the stock solution based on the stated concentration and/or density.

Reference

Teitelbaum SL. Calcifediol (25-hydroxyvitamin D3) in the treatment of uremic bone disease. *Ann Intern Med.* 1981 Mar;94(3):404-5.

Kleinman LM, Letteri JM, Asad SN, Ellis KJ, Cohn SH. Effects of calcifediol on calcified tissue in uremia. *Arch Intern Med.* 1978 May 15;138 Spec No:864-5.

Recker R, Schoenfeld P, Letteri J, Slatopolsky E, Goldsmith R, Brickman A. The efficacy of calcifediol in renal osteodystrophy. *Arch Intern Med.* 1978 May 15;138 Spec No:857-63.

Teitelbaum SL, Bone JM, Stein PM, Gilden JJ, Bates M, Boisseau VC, Avioli LV. Calcifediol in chronic renal insufficiency. Skeletal response. *JAMA.* 1976 Jan 12;235(2):164-7.

Inhibitor · Natural Compounds · Compound Libraries · Recombinant Proteins

This product is for Research Use Only · Not for Human or Veterinary or Therapeutic Use

Tel:781-999-4286 E_mail:info@targetmol.com Address:34 Washington Street,Wellesley Hills,MA 02481