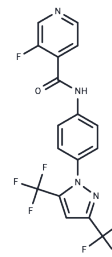


## Pyr6

## Chemical Properties

CAS No. :	245747-08-4
Formula:	C17H9F7N4O
Molecular Weight:	418.27
Storage:	Powder: -20°C for 3 years   In solvent: -80°C for 1 year Actual storage temperature shall be subject to the COA.



## Biological Description

Description	Pyr6 (N-[4-[3,5-Bis(trifluoromethyl)-1H-pyrazol-1-yl]phenyl]-3-fluoro-4-pyridinecarboxamide) is a selective TRPC3 inhibitor with IC50 of 0.49 $\mu$ M (Ca <sup>2+</sup> influx inhibition in thapsigargin depleted native RBL-2H3 cells). Pyr6 is an inhibitor of Ca <sup>2+</sup> entry, which displays higher potency to inhibit Ca <sup>2+</sup> entry mediated by CRAC channel than by TRPC3.
Targets(IC50)	Calcium Channel, TRP/TRPV Channel
In vitro	Pyr3 is selective inhibitor of TRPC3, inhibited Orai1- and TRPC3-mediated Ca(2+) entry and currents as well as mast cell activation with similar potency. By contrast, Pyr6 exhibited a 37-fold higher potency to inhibit Orai1-mediated Ca(2+) entry as compared with TRPC3-mediated Ca(2+) entry and potently suppressed mast cell activation.

## Solubility Information

Solubility	DMSO: 95 mg/mL (227.13 mM), Sonication is recommended. ( $< 1$ mg/ml refers to the product slightly soluble or insoluble)
In vivo Formulation	10% DMSO+40% PEG300+5% Tween 80+45% Saline: 10 mg/mL (23.91 mM), Sonication is recommended. <i>Please add the solvents sequentially, clarifying the solution as much as possible before adding the next one. Dissolve by heating and/or sonication if necessary. Working solution is recommended to be prepared and used immediately. The formulation provided above is for reference purposes only. In vivo formulations may vary and should be modified based on specific experimental conditions.</i>

### Preparing Stock Solutions

---

	<b>1mg</b>	<b>5mg</b>	<b>10mg</b>
1 mM	2.3908 mL	11.954 mL	23.908 mL
5 mM	0.4782 mL	2.3908 mL	4.7816 mL
10 mM	0.2391 mL	1.1954 mL	2.3908 mL
50 mM	0.0478 mL	0.2391 mL	0.4782 mL

---

Please select the appropriate solvent to prepare the stock solution, according to the solubility of the product in different solvents. Please use it as soon as possible.

Note: The dilution table applies only to solid products. For liquid products, please calculate the stock solution based on the stated concentration and/or density.

### Reference

Schleifer H, et al. Novel pyrazole compounds for pharmacological discrimination between receptor-operated and store-operated Ca(2+) entry pathways. Br J Pharmacol. 2012 Dec;167(8):1712-22.

**Inhibitor · Natural Compounds · Compound Libraries · Recombinant Proteins**

This product is for Research Use Only · Not for Human or Veterinary or Therapeutic Use

Tel:781-999-4286 E\_mail:info@targetmol.com Address:34 Washington Street,Wellesley Hills,MA 02481